

## Product datasheet for **TA344153**

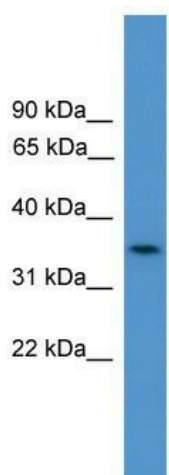
### C4orf19 Rabbit Polyclonal Antibody

#### Product data:

Product Type:	Primary Antibodies
Applications:	WB
Recommended Dilution:	WB
Reactivity:	Human
Host:	Rabbit
Isotype:	IgG
Clonality:	Polyclonal
Immunogen:	The immunogen for anti-C4orf19 antibody: synthetic peptide directed towards the N terminal of human C4orf19. Synthetic peptide located within the following region: MGCRCCKIIQSYLFDVPVQVSPGYVNEVNSCKLDEDDTDKLGKWSSEVL
Formulation:	Liquid. Purified antibody supplied in 1x PBS buffer with 0.09% (w/v) sodium azide and 2% sucrose.
Purification:	Affinity Purified
Conjugation:	Unconjugated
Storage:	Store at -20°C as received.
Stability:	Stable for 12 months from date of receipt.
Predicted Protein Size:	34 kDa
Gene Name:	chromosome 4 open reading frame 19
Database Link:	<a href="#">NP_060772</a> <a href="#">Entrez Gene 55286 Human</a> <a href="#">Q8IY42</a>
Background:	The function of C4orf19 remains unknown.
Synonyms:	FLJ11017
Note:	Immunogen Sequence Homology: Pig: 100%; Horse: 100%; Human: 100%; Dog: 93%; Rat: 93%; Mouse: 93%; Bovine: 93%; Rabbit: 93%; Guinea pig: 79%



[View online »](#)

**Product images:**

WB Suggested Anti-C4orf19 Antibody Titration:  
0.2-1 ug/ml; ELISA Titer: 1: 312500; Positive  
Control: COLO205 cell lysate; C4orf19 is  
supported by BioGPS gene expression data to be  
expressed in COLO205