

Product datasheet for **TA344151**

QRSL1 Rabbit Polyclonal Antibody

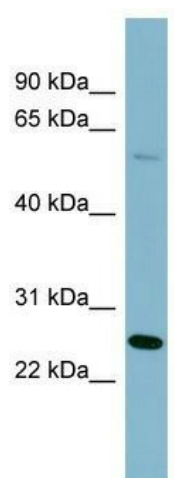
Product data:

Product Type:	Primary Antibodies
Applications:	WB
Recommended Dilution:	WB
Reactivity:	Human
Host:	Rabbit
Isotype:	IgG
Clonality:	Polyclonal
Immunogen:	The immunogen for anti-QRSL1 antibody: synthetic peptide directed towards the N terminal of human QRSL1. Synthetic peptide located within the following region: SYSKQYREKRKQNPHESENEDSDWLITGGSSGGSAAAVSAFTCYAALGSDT
Formulation:	Liquid. Purified antibody supplied in 1x PBS buffer with 0.09% (w/v) sodium azide and 2% sucrose.
Purification:	Affinity Purified
Conjugation:	Unconjugated
Storage:	Store at -20°C as received.
Stability:	Stable for 12 months from date of receipt.
Predicted Protein Size:	57 kDa
Gene Name:	glutaminyt-tRNA synthase (glutamine-hydrolyzing)-like 1
Database Link:	NP_060762 Entrez Gene 55278 Human Q9H0R6
Background:	The function of the QRSL1 protein remains unknown.
Synonyms:	GatA
Note:	Immunogen Sequence Homology: Human: 100%; Bovine: 93%; Horse: 79%



[View online »](#)

Product images:



WB Suggested Anti-QRSL1 Antibody Titration: 0.2-1 ug/ml; ELISA Titer: 1: 62500; Positive Control: HT1080 cell lysate; QRSL1 is supported by BioGPS gene expression data to be expressed in HT1080