

Product datasheet for **TA344150**

BSDC1 Rabbit Polyclonal Antibody

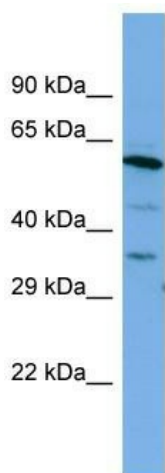
Product data:

Product Type:	Primary Antibodies
Applications:	WB
Recommended Dilution:	WB
Reactivity:	Human
Host:	Rabbit
Isotype:	IgG
Clonality:	Polyclonal
Immunogen:	The immunogen for Anti-BSDC1 antibody is: synthetic peptide directed towards the C-terminal region of Human BSDC1. Synthetic peptide located within the following region: HTGGPEPRPPARVETLREEAPTDLRVFELNSDSGKSTPSNNGKKSSTDI
Formulation:	Liquid. Purified antibody supplied in 1x PBS buffer with 0.09% (w/v) sodium azide and 2% sucrose. <i>Note that this product is shipped as lyophilized powder to China customers.</i>
Purification:	Affinity Purified
Conjugation:	Unconjugated
Storage:	Store at -20°C as received.
Stability:	Stable for 12 months from date of receipt.
Predicted Protein Size:	38 kDa
Gene Name:	BSD domain containing 1
Database Link:	NP_001137360 Entrez Gene 55108 Human Q9NW68
Background:	The function of this protein remains unknown.
Synonyms:	RP4-811H24.7
Note:	Immunogen Sequence Homology: Dog: 100%; Pig: 100%; Rat: 100%; Horse: 100%; Human: 100%; Mouse: 100%; Bovine: 100%; Rabbit: 100%; Zebrafish: 100%; Guinea pig: 100%



[View online »](#)

Product images:



Host: Rabbit
Target Name: BSDC1
Sample Tissue: PANC1 Cell Lysate
Antibody Dilution: 1.0 μ g/ml

Host: Rabbit; Target Name: BSDC1; Sample Tissue: PANC1 Whole cell lysates; Antibody Dilution: 1.0 ug/ml; BSDC1 is strongly supported by BioGPS gene expression data to be expressed in Human PANC1 cells