

## Product datasheet for **TA344149**

### UBE2L3 Rabbit Polyclonal Antibody

#### Product data:

Product Type:	Primary Antibodies
Applications:	IHC, WB
Recommended Dilution:	WB, IHC
Reactivity:	Human
Host:	Rabbit
Isotype:	IgG
Clonality:	Polyclonal
Immunogen:	The immunogen for anti-BSDC1 antibody: synthetic peptide directed towards the N terminal of human BSDC1. Synthetic peptide located within the following region: VISDTFAPSPDKTIDCDVITLMGTPSGTAEPYDGTKARLYSLQSDPATYC
Formulation:	Liquid. Purified antibody supplied in 1x PBS buffer with 0.09% (w/v) sodium azide and 2% sucrose. <i>Note that this product is shipped as lyophilized powder to China customers.</i>
Purification:	Affinity Purified
Conjugation:	Unconjugated
Storage:	Store at -20°C as received.
Stability:	Stable for 12 months from date of receipt.
Predicted Protein Size:	17 kDa
Gene Name:	ubiquitin conjugating enzyme E2 L3
Database Link:	<a href="#">NP_003338</a> <a href="#">Entrez Gene 7332 Human</a> <a href="#">P68036</a>



[View online »](#)

**Background:**

The function remains unknown. The modification of proteins with ubiquitin is an important cellular mechanism for targeting abnormal or short-lived proteins for degradation. Ubiquitination involves at least three classes of enzymes: ubiquitin-activating enzymes (E1s), ubiquitin-conjugating enzymes (E2s) and ubiquitin-protein ligases (E3s). This gene encodes a member of the E2 ubiquitin-conjugating enzyme family. This enzyme is demonstrated to participate in the ubiquitination of p53, c-Fos, and the NF- $\kappa$ B precursor p105 in vitro. Two alternatively spliced transcript variants encoding distinct isoforms have been found for this gene.

**Synonyms:**

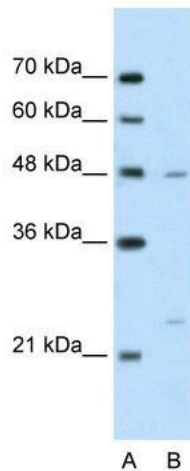
E2-F1; L-UBC; UBCH7; UbcM4

**Note:**

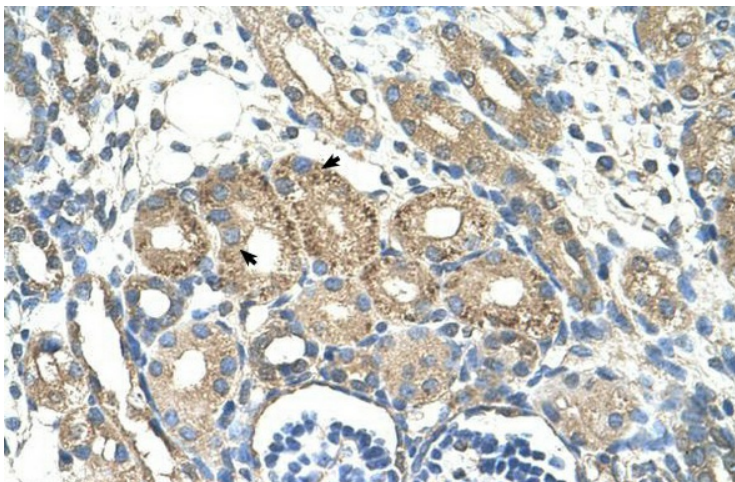
Immunogen Sequence Homology: Pig: 100%; Rat: 100%; Horse: 100%; Human: 100%; Mouse: 100%; Bovine: 100%; Rabbit: 100%; Guinea pig: 100%; Dog: 93%

**Protein Pathways:**

Parkinson's disease, Ubiquitin mediated proteolysis

**Product images:**


WB Suggested Anti-BSDC1 Antibody Titration: 2.5 ug/ml; Positive Control: Jurkat cell lysate



Human kidney