

Product datasheet for **TA344148**

TMEM16A (ANO1) Rabbit Polyclonal Antibody

Product data:

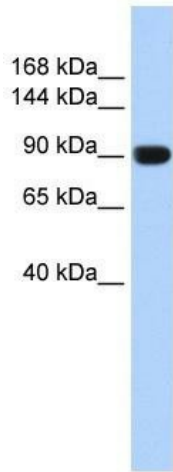
Product Type:	Primary Antibodies
Applications:	WB
Recommended Dilution:	WB
Reactivity:	Human
Host:	Rabbit
Isotype:	IgG
Clonality:	Polyclonal
Immunogen:	The immunogen for anti-TMEM16A antibody: synthetic peptide directed towards the middle region of human TMEM16A. Synthetic peptide located within the following region: HGFVNHTLSSFNVSDFQNGTAPNDPLDLGYEVQICRYKDYREPPWSENKY
Formulation:	Liquid. Purified antibody supplied in 1x PBS buffer with 0.09% (w/v) sodium azide and 2% sucrose. <i>Note that this product is shipped as lyophilized powder to China customers.</i>
Purification:	Affinity Purified
Conjugation:	Unconjugated
Storage:	Store at -20°C as received.
Stability:	Stable for 12 months from date of receipt.
Predicted Protein Size:	111 kDa
Gene Name:	anoctamin 1
Database Link:	NP_060513 Entrez Gene 55107 Human Q5XXA6
Background:	TMEM16A belongs to the anoctamin family. TMEM16A acts as a calcium-activated chloride channel. It is required for normal tracheal development.
Synonyms:	DOG1; ORAOV2; TAOS2; TMEM16A
Note:	Immunogen Sequence Homology: Dog: 100%; Pig: 100%; Rat: 100%; Horse: 100%; Human: 100%; Mouse: 100%; Bovine: 100%; Guinea pig: 100%; Rabbit: 79%



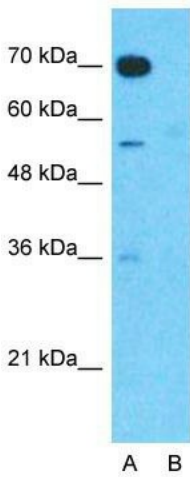
[View online »](#)

Protein Families: Transmembrane

Product images:



WB Suggested Anti-TMEM16A Antibody Titration: 0.2-1 ug/ml; ELISA Titer: 1: 1562500; Positive Control: Human Muscle



Anti-TMEM16A Western Blot & Peptide Block Validation

Lysate: Fetal Muscle

Lane A: Primary Antibody
Lane B: Primary Antibody + Blocking Peptide

Primary Antibody Concentration: 1.0µg/ml
Peptide Concentration: 5.0µg/ml
Lysate Quantity: 25µg/lane
Gel Concentration: 12%

Host: Rabbit; Target Name: TMEM16A; Sample Tissue: Human Fetal Muscle; Lane A: Primary Antibody; Lane B: Primary Antibody + Blocking Peptide; Primary Antibody Concentration: 1 ug/ml; Peptide Concentration: 5 ug/ml; Lysate Quantity: 25 ug/lane/lane; Gel Co