

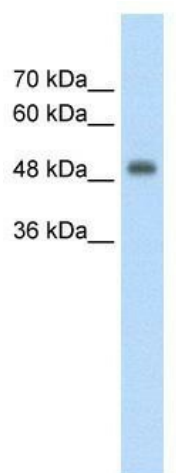
## Product datasheet for TA344146

### CUEDC1 Rabbit Polyclonal Antibody

#### Product data:

Product Type:	Primary Antibodies
Applications:	WB
Recommended Dilution:	WB
Reactivity:	Human
Host:	Rabbit
Isotype:	IgG
Clonality:	Polyclonal
Immunogen:	The immunogen for anti-CUEDC1 antibody: synthetic peptide directed towards the middle region of human CUEDC1. Synthetic peptide located within the following region: RNRDFLALERDRLKYESQKSSSVAVGNDFGFSSPVPGTGDANPAVSE
Formulation:	Liquid. Purified antibody supplied in 1x PBS buffer with 0.09% (w/v) sodium azide and 2% sucrose.
Purification:	Affinity Purified
Conjugation:	Unconjugated
Storage:	Store at -20°C as received.
Stability:	Stable for 12 months from date of receipt.
Predicted Protein Size:	42 kDa
Database Link:	<a href="#">NP_060419</a> <a href="#">Entrez Gene 404093 Human</a>
Background:	The function remains unknown.
Synonyms:	DKFZp547L163; FLJ20739
Note:	Immunogen Sequence Homology: Dog: 100%; Pig: 100%; Rat: 100%; Horse: 100%; Human: 100%; Mouse: 100%; Guinea pig: 100%; Bovine: 93%; Rabbit: 93%; Zebrafish: 93%
Protein Families:	Druggable Genome


[View online »](#)

**Product images:**

WB Suggested Anti-CUEDC1 Antibody Titration:  
2.5 ug/ml; Positive Control: HepG2 cell lysate