

## Product datasheet for **TA344145**

### SLC48A1 Rabbit Polyclonal Antibody

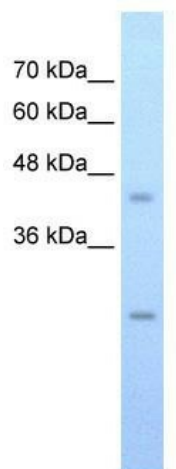
#### Product data:

|                         |  |
|-------------------------|--|
| Product Type:           | Primary Antibodies   |
| Applications:           | IHC, WB  |
| Recommended Dilution:   | WB, IHC  |
| Reactivity:             | Human  |
| Host:                   | Rabbit   |
| Isotype:                | IgG  |
| Clonality:              | Polyclonal   |
| Immunogen:              | The immunogen for anti-FLJ20489 antibody: synthetic peptide directed towards the C terminal of human FLJ20489. Synthetic peptide located within the following region: LISGDSPASAFQSAGIIGVSHRARPGSVFLARSEESLYLRPGQSQSEVKV |
| Formulation:            | Liquid. Purified antibody supplied in 1x PBS buffer with 0.09% (w/v) sodium azide and 2% sucrose.<br><i>Note that this product is shipped as lyophilized powder to China customers.</i>                                  |
| Purification:           | Affinity Purified  |
| Conjugation:            | Unconjugated   |
| Storage:                | Store at -20°C as received.  |
| Stability:              | Stable for 12 months from date of receipt.   |
| Predicted Protein Size: | 26 kDa   |
| Gene Name:              | solute carrier family 48 member 1  |
| Database Link:          | <a href="#">NP_060312</a><br><a href="#">Entrez Gene 55652 Human</a><br><a href="#">Q6P1K1</a>   |
| Background:             | The function remains unknown.  |
| Synonyms:               | hHRG-1; HRG-1; HRG1  |
| Protein Families:       | Transmembrane  |

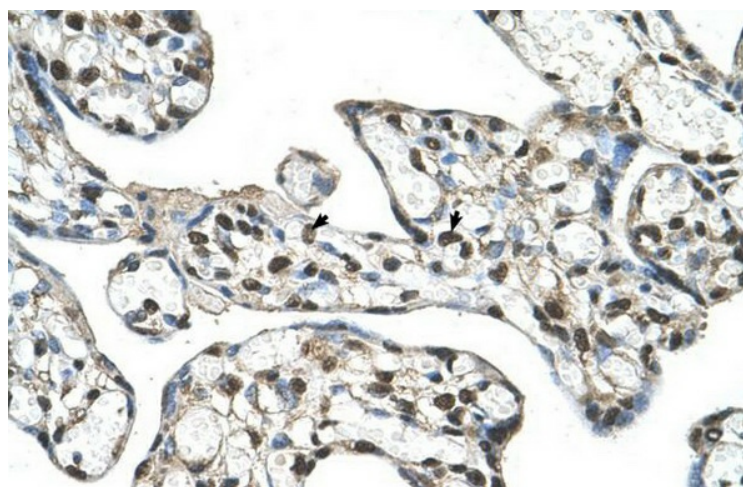


[View online »](#)

## Product images:



WB Suggested Anti-FLJ20489 Antibody Titration:  
0.0625 ug/ml; Positive Control: HepG2 cell lysate



Human Placenta