

Product datasheet for **TA344143**

EPS8L1 Rabbit Polyclonal Antibody

Product data:

Product Type:	Primary Antibodies
Applications:	WB
Recommended Dilution:	WB
Reactivity:	Human
Host:	Rabbit
Isotype:	IgG
Clonality:	Polyclonal
Immunogen:	The immunogen for anti-EPS8L1 antibody: synthetic peptide directed towards the middle region of human EPS8L1. Synthetic peptide located within the following region: LQKEELRAVSP EEGARVYSQVTVQRSLLLEDKEK VSELEAVMEKQKKKVEG
Formulation:	Liquid. Purified antibody supplied in 1x PBS buffer with 0.09% (w/v) sodium azide and 2% sucrose. <i>Note that this product is shipped as lyophilized powder to China customers.</i>
Purification:	Affinity Purified
Conjugation:	Unconjugated
Storage:	Store at -20°C as received.
Stability:	Stable for 12 months from date of receipt.
Predicted Protein Size:	66 kDa
Gene Name:	EPS8 like 1
Database Link:	NP_060199 Entrez Gene 54869 Human Q8TE68
Background:	EPS8L1 a protein that is related to epidermal growth factor receptor pathway substrate 8 (EPS8), a substrate for the epidermal growth factor receptor. The function of this protein is unknown. This gene encodes a protein that is related to epidermal growth factor receptor pathway substrate 8 (EPS8), a substrate for the epidermal growth factor receptor. The function of this protein is unknown. At least two alternatively spliced transcript variants encoding different isoforms have been found for this gene.



[View online »](#)

Synonyms: DRC3; EPS8R1; PP10566

Note: Immunogen Sequence Homology: Dog: 100%; Pig: 100%; Horse: 100%; Human: 100%; Rat: 93%; Mouse: 93%; Bovine: 93%; Zebrafish: 93%; Guinea pig: 86%

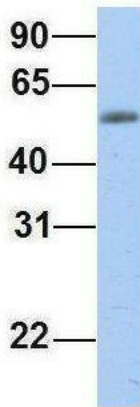
Protein Families: Druggable Genome

Product images:



WB Suggested Anti-EPS8L1 Antibody Titration: 0.2-1 ug/ml; ELISA Titer: 1: 312500; Positive Control: Hela cell lysate

EPS8L1



Rabbit Anti-EPS8L1
 Sample Type: Human Fetal Muscle
 Antibody Concentration: 1ug/mL

Host: Rabbit; Target Name: EPS8L1; Sample Tissue: Human Fetal Muscle; Antibody Dilution: 1.0 ug/ml

