

Product datasheet for **TA344142**

EPS8L1 Rabbit Polyclonal Antibody

Product data:

Product Type:	Primary Antibodies
Applications:	IHC, WB
Recommended Dilution:	WB, IHC
Reactivity:	Human
Host:	Rabbit
Isotype:	IgG
Clonality:	Polyclonal
Immunogen:	The immunogen for anti-EPS8L1 antibody: synthetic peptide directed towards the N terminal of human EPS8L1. Synthetic peptide located within the following region: QRDRSPAAETPPLQRRPSVRAVISTVERGAGRGRPQAKPIPEAEEAQRPE
Formulation:	Liquid. Purified antibody supplied in 1x PBS buffer with 0.09% (w/v) sodium azide and 2% sucrose.
Purification:	Affinity Purified
Conjugation:	Unconjugated
Storage:	Store at -20°C as received.
Stability:	Stable for 12 months from date of receipt.
Predicted Protein Size:	66 kDa
Gene Name:	EPS8 like 1
Database Link:	NP_060199 Entrez Gene 54869 Human Q8TE68
Background:	EPS8L1 a protein that is related to epidermal growth factor receptor pathway substrate 8 (EPS8), a substrate for the epidermal growth factor receptor. The function of this protein is unknown. This gene encodes a protein that is related to epidermal growth factor receptor pathway substrate 8 (EPS8), a substrate for the epidermal growth factor receptor. The function of this protein is unknown. Several alternatively spliced transcript variants encoding different isoforms exist.
Synonyms:	DRC3; EPS8R1; PP10566



[View online »](#)

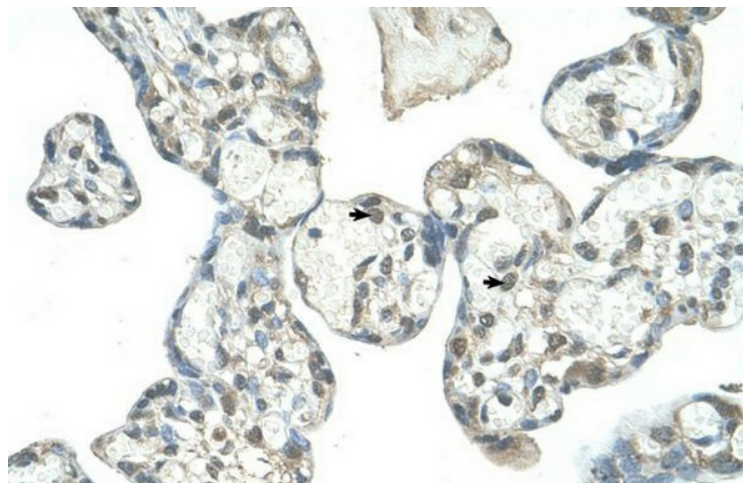
Note: Immunogen Sequence Homology: Rat: 100%; Horse: 100%; Human: 100%; Mouse: 100%; Dog: 86%

Protein Families: Druggable Genome

Product images:



WB Suggested Anti-EPS8L1 Antibody Titration: 1.25 ug/ml; Positive Control: HepG2 cell lysate



Human Placenta