

Product datasheet for **TA344141**

Esrp2 Rabbit Polyclonal Antibody

Product data:

Product Type:	Primary Antibodies
Applications:	WB
Recommended Dilution:	WB
Reactivity:	Mouse
Host:	Rabbit
Isotype:	IgG
Clonality:	Polyclonal
Immunogen:	The immunogen for anti-Esrp2 antibody: synthetic peptide corresponding to a region of Mouse. Synthetic peptide located within the following region: LLPAARVPAAATPLAYYPGPATQLYMNYTAYYPSPPVSPPTVGYLTPPT
Formulation:	Liquid. Purified antibody supplied in 1x PBS buffer with 0.09% (w/v) sodium azide and 2% sucrose. <i>Note that this product is shipped as lyophilized powder to China customers.</i>
Purification:	Affinity Purified
Conjugation:	Unconjugated
Storage:	Store at -20°C as received.
Stability:	Stable for 12 months from date of receipt.
Predicted Protein Size:	77 kDa
Gene Name:	epithelial splicing regulatory protein 2
Database Link:	NP_789808 Entrez Gene 77411 Mouse Q8K0G8
Background:	Esrp2 is an mRNA splicing factor that regulates the formation of epithelial cell-specific isoforms. It specifically regulates the expression of FGFR2-IIIb, an epithelial cell-specific isoform of FGFR2. It also regulates the splicing of CD44, CTNND1, ENAH, 3 transcripts that undergo changes in splicing during the epithelial-to-mesenchymal transition (EMT). It acts by directly binding specific sequences in mRNAs and binds the GU-rich sequence motifs in the ISE/ISS-3, a cis-element regulatory region present in the mRNA of FGFR2.

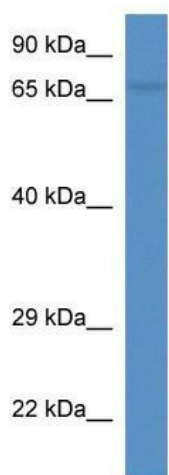


[View online »](#)

Synonyms: FLJ21918; FLJ22248; RBM35B

Note: Immunogen Sequence Homology: Pig: 100%; Rat: 100%; Horse: 100%; Human: 100%; Mouse: 100%; Bovine: 100%; Rabbit: 100%; Guinea pig: 100%; Dog: 92%; Zebrafish: 92%

Product images:



WB Suggested Anti-Esrp2 Antibody; Titration: 1.0 ug/ml; Positive Control: Mouse Liver