

Product datasheet for **TA344139**

Asporin (ASPN) Rabbit Polyclonal Antibody

Product data:

| | |
|-------------------------|--|
| Product Type: | Primary Antibodies |
| Applications: | IHC, WB |
| Recommended Dilution: | WB, IHC |
| Reactivity: | Human |
| Host: | Rabbit |
| Isotype: | IgG |
| Clonality: | Polyclonal |
| Immunogen: | The immunogen for anti-ASPN antibody: synthetic peptide directed towards the middle region of human ASPN. Synthetic peptide located within the following region: NKISTVELEDFKRYKELQRLGLGNNKITDIENGLANIPRVREIHLENNK |
| Formulation: | Liquid. Purified antibody supplied in 1x PBS buffer with 0.09% (w/v) sodium azide and 2% sucrose. <i>Note that this product is shipped as lyophilized powder to China customers.</i> |
| Purification: | Affinity Purified |
| Conjugation: | Unconjugated |
| Storage: | Store at -20°C as received. |
| Stability: | Stable for 12 months from date of receipt. |
| Predicted Protein Size: | 42 kDa |
| Gene Name: | asporin |
| Database Link: | NP_060150 Entrez Gene 54829 Human Q9BXN1 |
| Background: | ASPN belongs to a family of leucine-rich repeat (LRR) proteins associated with the cartilage matrix. The name asporin reflects the unique aspartate-rich N terminus and the overall similarity to decorin. ASPN belongs to a family of leucine-rich repeat (LRR) proteins associated with the cartilage matrix. The name asporin reflects the unique aspartate-rich N terminus and the overall similarity to decorin (MIM 125255) (Lorenzo et al., 2001). [supplied by OMIM] |
| Synonyms: | OS3; PLAP-1; PLAP1; SLRR1C |

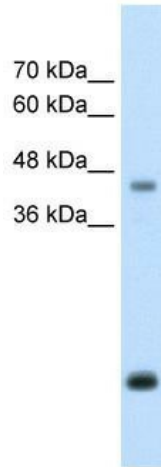


[View online »](#)

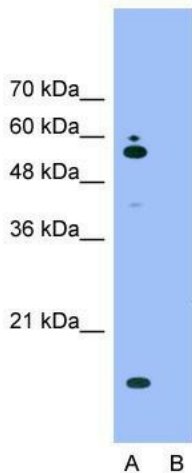
Note: Immunogen Sequence Homology: Rat: 100%; Human: 100%; Pig: 93%; Horse: 93%; Mouse: 93%; Bovine: 93%; Zebrafish: 90%; Dog: 86%; Rabbit: 86%; Guinea pig: 86%

Protein Families: Secreted Protein

Product images:



WB Suggested Anti-ASP Antibody Titration: 2.5 ug/ml; Positive Control: HepG2 cell lysate



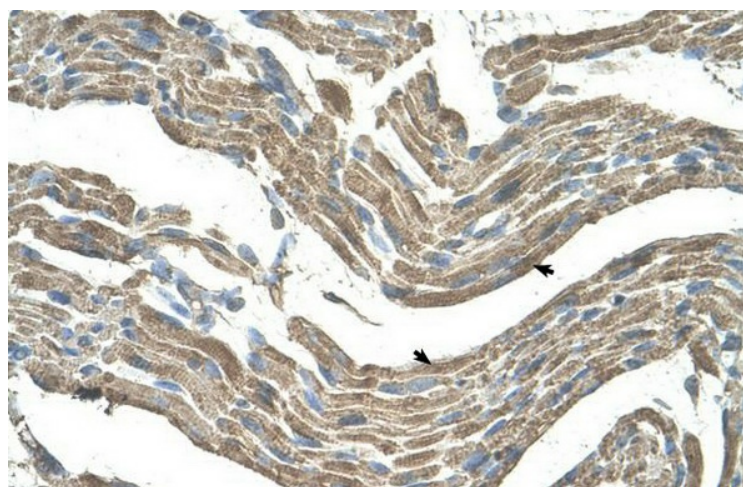
Anti-ASP Western Blot & Peptide Block Validation

Lysate: HepG2 Cell

Lane A: Primary Antibody
Lane B: Primary Antibody + Blocking Peptide

Primary Antibody Concentration: 2.5µg/ml
Peptide Concentration: 2.0µg/ml
Lysate Quantity: 25µg/lane
Gel Concentration: 12%

Host: Rabbit; Target Name: ASPN; Sample Tissue: HepG2; Lane A: Primary Antibody; Lane B: Primary Antibody + Blocking Peptide; Primary Antibody Concentration: 2.5 ug/mL; Peptide Concentration: 2.0 ug/mL; Lysate Quantity: 25 ug/lane; Gel Concentration: 12%



Human Muscle