

## Product datasheet for **TA344138**

### Kindlin (FERMT1) Rabbit Polyclonal Antibody

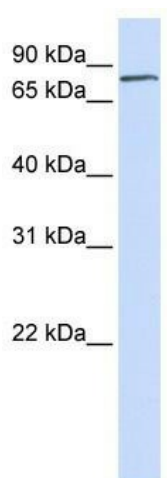
#### Product data:

|                         |   |
|-------------------------|---|
| Product Type:           | Primary Antibodies  |
| Applications:           | WB  |
| Recommended Dilution:   | WB  |
| Reactivity:             | Human   |
| Host:                   | Rabbit  |
| Isotype:                | IgG   |
| Clonality:              | Polyclonal  |
| Immunogen:              | The immunogen for anti-FERMT1 antibody: synthetic peptide directed towards the N terminal of human FERMT1. Synthetic peptide located within the following region:<br>LSSTDFTFASWELVVRVDHPNEEQKDVTLRVSGDLHVGGMMLKLVLEQIN |
| Formulation:            | Liquid. Purified antibody supplied in 1x PBS buffer with 0.09% (w/v) sodium azide and 2% sucrose.   |
| Purification:           | Affinity Purified   |
| Conjugation:            | Unconjugated  |
| Storage:                | Store at -20°C as received.   |
| Stability:              | Stable for 12 months from date of receipt.  |
| Predicted Protein Size: | 77 kDa  |
| Gene Name:              | fermitin family member 1  |
| Database Link:          | <a href="#">NP_060141</a><br><a href="#">Entrez Gene 55612 Human</a><br><a href="#">Q9BQL6</a>  |
| Background:             | FERMT1 is involved in cell adhesion, possibly via its interaction with integrins. It may mediate TGF-beta 1 signaling in tumor progression. Defects in FERMT1 are the cause of Kindler syndrome.                        |
| Synonyms:               | C20orf42; DTGCU2; KIND1; UNC112A; URP1  |
| Note:                   | Immunogen Sequence Homology: Human: 100%; Rabbit: 93%; Dog: 86%; Horse: 86%; Bovine: 86%; Rat: 79%  |



[View online »](#)

## Product images:



WB Suggested Anti-FERMT1 Antibody Titration:  
0.2-1 ug/ml; ELISA Titer: 1: 1562500; Positive  
Control: Human heart