

Product datasheet for **TA344137**

TENT5A Rabbit Polyclonal Antibody

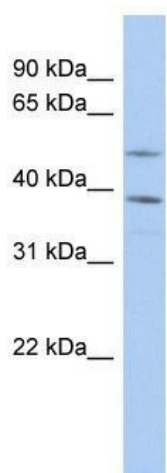
Product data:

Product Type:	Primary Antibodies
Applications:	WB
Recommended Dilution:	WB
Reactivity:	Human
Host:	Rabbit
Isotype:	IgG
Clonality:	Polyclonal
Immunogen:	The immunogen for anti-FAM46A antibody: synthetic peptide directed towards the N terminal of human FAM46A. Synthetic peptide located within the following region: MAEGEGYFAMSEDELACSPYIPLGGDFGGDFGGDFGGDFGGGGSFGG
Formulation:	Liquid. Purified antibody supplied in 1x PBS buffer with 0.09% (w/v) sodium azide and 2% sucrose. <i>Note that this product is shipped as lyophilized powder to China customers.</i>
Purification:	Affinity Purified
Conjugation:	Unconjugated
Storage:	Store at -20°C as received.
Stability:	Stable for 12 months from date of receipt.
Predicted Protein Size:	50 kDa
Gene Name:	family with sequence similarity 46 member A
Database Link:	NP_060103 Entrez Gene 55603 Human Q96IP4
Background:	The specific function of the protein remains unknown.
Synonyms:	C6orf37; XTP11
Note:	Immunogen Sequence Homology: Rat: 100%; Human: 100%; Yeast: 100%; Pig: 92%; Horse: 92%; Mouse: 92%; Zebrafish: 83%



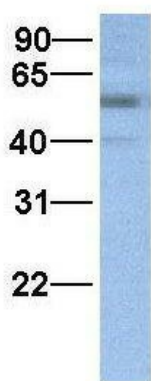
[View online »](#)

Product images:



WB Suggested Anti-FAM46A Antibody Titration:
0.2-1 ug/ml; ELISA Titer: 1: 312500; Positive
Control: PANC1 cell lysate

FAM46A



Rabbit Anti-FAM46A
Sample Type: Human Fetal Lung
Antibody Concentration: 1ug/mL

Host: Rabbit; Target Name: FAM46A; Sample
Tissue: Human Fetal Lung; Antibody Dilution: 1.0
ug/ml