

Product datasheet for **TA344133**

Plunc (BPIFA1) Rabbit Polyclonal Antibody

Product data:

Product Type:	Primary Antibodies
Applications:	IHC, WB
Recommended Dilution:	WB, IHC
Reactivity:	Human
Host:	Rabbit
Isotype:	IgG
Clonality:	Polyclonal
Immunogen:	The immunogen for anti-PLUNC antibody: synthetic peptide directed towards the middle region of human PLUNC. Synthetic peptide located within the following region: GLNNIIDIKVTDPQLLELGLVQSPDGHRLYVTIPLGIKLVNTPLVGASL
Formulation:	Liquid. Purified antibody supplied in 1x PBS buffer with 0.09% (w/v) sodium azide and 2% sucrose. <i>Note that this product is shipped as lyophilized powder to China customers.</i>
Purification:	Affinity Purified
Conjugation:	Unconjugated
Storage:	Store at -20°C as received.
Stability:	Stable for 12 months from date of receipt.
Predicted Protein Size:	28 kDa
Gene Name:	BPI fold containing family A member 1
Database Link:	NP_057667 Entrez Gene 51297 Human Q9NP55



[View online »](#)

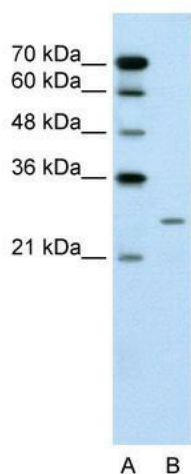
Background: PLUNC is the human homolog of murine plunc and is specifically expressed in the upper airways and nasopharyngeal regions. The exact biological function of this protein is not known, however, it has been suggested to be involved in inflammatory responses to irritants in the upper airways. It may also serve as a potential molecular marker for detection of micrometastasis in non-small-cell lung cancer. This gene is the human homolog of murine plunc, and like the mouse gene, is specifically expressed in the upper airways and nasopharyngeal regions. The exact biological function of this gene is not known, however, it has been suggested to be involved in inflammatory responses to irritants in the upper airways. It may also serve as a potential molecular marker for detection of micrometastasis in non-small-cell lung cancer. Multiple transcript variants resulting from alternative splicing in the 3' UTR have been detected, but the full-length nature of only two is known.

Synonyms: bA49G10.5; LUNX; NASG; PLUNC; SPLUNC1; SPURT

Note: Immunogen Sequence Homology: Dog: 100%; Pig: 100%; Rat: 100%; Goat: 100%; Human: 100%; Mouse: 100%; Bovine: 100%; Guinea pig: 100%; Rabbit: 93%

Protein Families: Secreted Protein

Product images:



WB Suggested Anti-PLUNC Antibody Titration: 0.2-1 ug/ml; Positive Control: Jurkat cell lysate



Immunohistochemistry with Human Lung, respiratory epithelium tissue at an antibody concentration of 5.0 ug/ml using anti-PLUNC antibody