

Product datasheet for **TA344126**

ARPP21 Rabbit Polyclonal Antibody

Product data:

Product Type:	Primary Antibodies
Applications:	WB
Recommended Dilution:	WB
Reactivity:	Human
Host:	Rabbit
Isotype:	IgG
Clonality:	Polyclonal
Immunogen:	The immunogen for anti-ARPP-21 antibody: synthetic peptide directed towards the N terminal of human ARPP-21. Synthetic peptide located within the following region: ESSARPGGESLQDQESIHLQLSSFSSLQEEDKSRKDDSEREKEKDKNKDK
Formulation:	Liquid. Purified antibody supplied in 1x PBS buffer with 0.09% (w/v) sodium azide and 2% sucrose. <i>Note that this product is shipped as lyophilized powder to China customers.</i>
Purification:	Affinity Purified
Conjugation:	Unconjugated
Storage:	Store at -20°C as received.
Stability:	Stable for 12 months from date of receipt.
Predicted Protein Size:	89 kDa
Gene Name:	cAMP regulated phosphoprotein 21kDa
Database Link:	NP_057384 Entrez Gene 10777 Human Q9UBL0
Background:	ARPP-21 contains 1 R3H domain. Isoform 2 may act as a competitive inhibitor of calmodulin-dependent enzymes such as calcineurin in neurons. Isoform 1 is methylated by CARM1 in immature thymocytes.
Synonyms:	ARPP-21; R3HDM3; RCS; TARPP
Note:	Immunogen Sequence Homology: Dog: 100%; Pig: 100%; Rat: 100%; Horse: 100%; Human: 100%; Mouse: 100%; Bovine: 100%; Rabbit: 100%; Guinea pig: 93%; Yeast: 82%



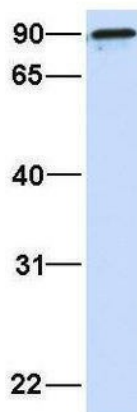
[View online »](#)

Product images:



WB Suggested Anti-ARPP-21 Antibody Titration:
0.2-1 ug/ml; ELISA Titer: 1: 62500; Positive
Control: Human brain

ARPP-21



Rabbit Anti-ARPP-21
Sample Type: Human Fetal Brain
Antibody Concentration: 1ug/mL

Host: Rabbit; Target Name: ARPP-21; Sample
Tissue: Human Fetal Brain; Antibody Dilution: 1.0
ug/ml