

## Product datasheet for **TA344125**

### DCXR Rabbit Polyclonal Antibody

#### Product data:

Product Type:	Primary Antibodies
Applications:	IHC, WB
Recommended Dilution:	WB, IHC
Reactivity:	Human
Host:	Rabbit
Isotype:	IgG
Clonality:	Polyclonal
Immunogen:	The immunogen for anti-DCXR antibody: synthetic peptide directed towards the middle region of human DCXR. Synthetic peptide located within the following region: STKGALDMLTKVMALELGPHKIRVNAVNPVWMTSMGQATWSDPHKAKTM
Formulation:	Liquid. Purified antibody supplied in 1x PBS buffer with 0.09% (w/v) sodium azide and 2% sucrose. <i>Note that this product is shipped as lyophilized powder to China customers.</i>
Purification:	Affinity Purified
Conjugation:	Unconjugated
Storage:	Store at -20°C as received.
Stability:	Stable for 12 months from date of receipt.
Predicted Protein Size:	27 kDa
Gene Name:	dicarbonyl/L-xylulose reductase
Database Link:	<a href="#">NP_057370</a> <a href="#">Entrez Gene 51181 Human</a> <a href="#">Q7Z4W1</a>
Background:	DCXR is an enzyme that has both diacetyl reductase and L-xylulose reductase activities. DCXR is an enzyme that has both diacetyl reductase (EC 1.1.1.5) and L-xylulose reductase (EC 1.1.1.10) activities (Nakagawa et al., 2002). [supplied by OMIM]
Synonyms:	DCR; HCR2; HCR2; KIDCR; P34H; PNTSU; SDR20C1; XR
Note:	Immunogen Sequence Homology: Pig: 100%; Rat: 100%; Horse: 100%; Human: 100%; Mouse: 100%; Bovine: 100%; Guinea pig: 100%; Dog: 93%; Zebrafish: 86%

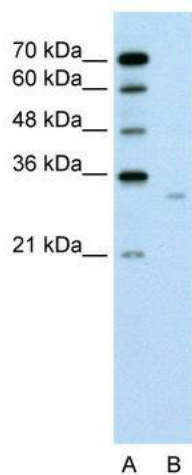


[View online »](#)

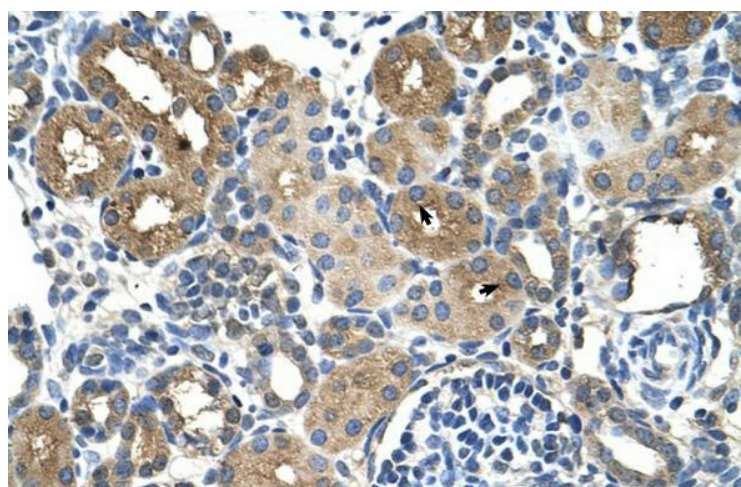
Protein Families: Druggable Genome

Protein Pathways: Metabolic pathways, Pentose and glucuronate interconversions

### Product images:



WB Suggested Anti-DCXR Antibody Titration: 0.2-1 ug/ml; Positive Control: Jurkat cell lysate



Human kidney