

Product datasheet for TA344124

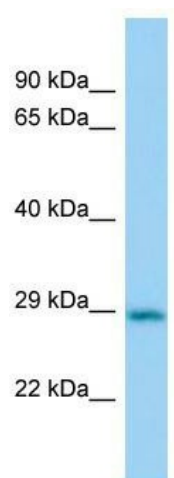
Cbr2 Rabbit Polyclonal Antibody

Product data:

Product Type:	Primary Antibodies
Applications:	WB
Recommended Dilution:	WB
Reactivity:	Mouse
Host:	Rabbit
Isotype:	IgG
Clonality:	Polyclonal
Immunogen:	The immunogen for Anti-Cbr2 antibody is: synthetic peptide directed towards the N-terminal region of Mouse Cbr2. Synthetic peptide located within the following region: VCVDLGWDWDATEKALGGIGPVDLLVNNAALVIMQPFLEVTKEAFDRSFSV
Formulation:	Liquid. Purified antibody supplied in 1x PBS buffer with 0.09% (w/v) sodium azide and 2% sucrose. <i>Note that this product is shipped as lyophilized powder to China customers.</i>
Purification:	Affinity Purified
Conjugation:	Unconjugated
Storage:	Store at -20°C as received.
Stability:	Stable for 12 months from date of receipt.
Predicted Protein Size:	26 kDa
Gene Name:	carbonyl reductase 2
Database Link:	NP_031647 Entrez Gene 12409 Mouse P08074
Background:	Cbr2 may function in the pulmonary metabolism of endogenous carbonyl compounds, such as aliphatic aldehydes and ketones derived from lipid peroxidation, 3-ketosteroids and fatty aldehydes, as well as in xenobiotic metabolism.
Synonyms:	MLCR
Note:	Immunogen Sequence Homology: Dog: 100%; Pig: 100%; Rat: 100%; Human: 100%; Mouse: 100%; Guinea pig: 100%; Horse: 92%; Bovine: 92%



[View online »](#)

Product images:

Host: Rabbit; Target Name: Cbr2; Sample Tissue: Mouse Lung lysates; Antibody Dilution: 1.0 ug/ml