

## Product datasheet for **TA344123**

### Cornulin (CRNN) Rabbit Polyclonal Antibody

#### Product data:

Product Type:	Primary Antibodies
Applications:	WB
Recommended Dilution:	WB
Reactivity:	Human
Host:	Rabbit
Isotype:	IgG
Clonality:	Polyclonal
Immunogen:	The immunogen for anti-CRNN antibody: synthetic peptide directed towards the middle region of human CRNN. Synthetic peptide located within the following region: GDRQPTVVGEEWVDDHSRETVILRLDQGNLHTSVSSAQGDAAQSEEKRG
Formulation:	Liquid. Purified antibody supplied in 1x PBS buffer with 0.09% (w/v) sodium azide and 2% sucrose. <i>Note that this product is shipped as lyophilized powder to China customers.</i>
Purification:	Affinity Purified
Conjugation:	Unconjugated
Storage:	Store at -20°C as received.
Stability:	Stable for 12 months from date of receipt.
Predicted Protein Size:	52 kDa
Gene Name:	cornulin
Database Link:	<a href="#">NP_057274</a> <a href="#">Entrez Gene 49860 Human</a> <a href="#">Q9UBG3</a>
Background:	This gene encodes a member of the 'fused gene' family of proteins, which contain N-terminus EF-hand domains and multiple tandem peptide repeats. The encoded protein contains two EF-hand Ca <sup>2+</sup> binding domains in its N-terminus and two glutamine- and threonine-rich 60 amino acid repeats in its C-terminus. This gene, also known as squamous epithelial heat shock protein 53, may play a role in the mucosal/epithelial immune response and epidermal differentiation.

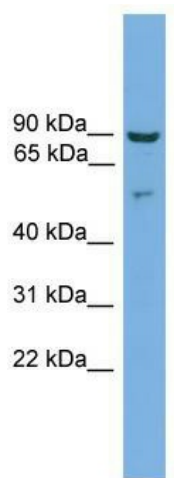


[View online »](#)

**Synonyms:** C1orf10; DRC1; PDRC1; SEP53

**Note:** Immunogen Sequence Homology: Human: 100%; Dog: 85%; Horse: 79%

**Product images:**



WB Suggested Anti-CRNN Antibody; Titration: 1.0 ug/ml; Positive Control: HT1080 Whole Cell