

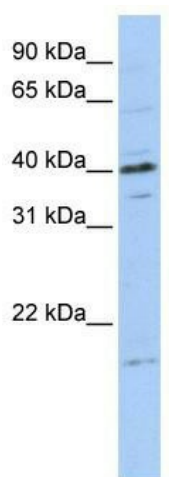
Product datasheet for **TA344122**

TPPP3 Rabbit Polyclonal Antibody

Product data:

Product Type:	Primary Antibodies
Applications:	WB
Recommended Dilution:	WB
Reactivity:	Human
Host:	Rabbit
Isotype:	IgG
Clonality:	Polyclonal
Immunogen:	The immunogen for anti-TPPP3 antibody: synthetic peptide directed towards the middle region of human TPPP3. Synthetic peptide located within the following region: PANVGVTAKTGGAVDRLTDSRYTGSHKERFDESGKGKGIAGRQDILDD
Formulation:	Liquid. Purified antibody supplied in 1x PBS buffer with 0.09% (w/v) sodium azide and 2% sucrose.
Purification:	Affinity Purified
Conjugation:	Unconjugated
Storage:	Store at -20°C as received.
Stability:	Stable for 12 months from date of receipt.
Predicted Protein Size:	19 kDa
Gene Name:	tubulin polymerization promoting protein family member 3
Database Link:	NP_057224 Entrez Gene 51673 Human Q9BW30
Background:	TPPP3 belongs to the TPPP family. This protein differentially expressed in the dorsolateral prefrontal cortex from patients with schizophrenia. The function of TPPP3 remains unknown.
Synonyms:	CGI-38; p20; p25gamma; TPPP
Note:	Immunogen Sequence Homology: Dog: 100%; Pig: 100%; Rat: 100%; Horse: 100%; Human: 100%; Mouse: 100%; Bovine: 100%; Zebrafish: 100%; Guinea pig: 100%; Rabbit: 93%


[View online »](#)

Product images:


WB Suggested Anti-TPPP3 Antibody Titration: 0.2-1 ug/ml; ELISA Titer: 1: 312500; Positive Control: 721_B cell lysate