

Product datasheet for **TA344118**

GAPex 5 (GAPVD1) Rabbit Polyclonal Antibody

Product data:

Product Type:	Primary Antibodies
Applications:	IHC, WB
Recommended Dilution:	WB, IHC
Reactivity:	Human
Host:	Rabbit
Isotype:	IgG
Clonality:	Polyclonal
Immunogen:	The immunogen for anti-GAPVD1 antibody: synthetic peptide directed towards the N terminal of human GAPVD1. Synthetic peptide located within the following region: FKLFSEGLFSAKLFLTATLHEPIMQLLVEDEDHLETDPNKLIERFSPSQQ
Formulation:	Liquid. Purified antibody supplied in 1x PBS buffer with 0.09% (w/v) sodium azide and 2% sucrose. <i>Note that this product is shipped as lyophilized powder to China customers.</i>
Purification:	Affinity Purified
Conjugation:	Unconjugated
Storage:	Store at -20°C as received.
Stability:	Stable for 12 months from date of receipt.
Predicted Protein Size:	166 kDa
Gene Name:	GTPase activating protein and VPS9 domains 1
Database Link:	NP_056450 Entrez Gene 26130 Human Q14C86



[View online »](#)

Background:

GAPVD1 acts both as a GTPase-activating protein (GAP) and a guanine nucleotide exchange factor (GEF), and participates in various processes such as endocytosis, insulin receptor internalization or LC2A4/GLUT4 trafficking. It acts as a GEF for the Ras-related protein RAB31 by exchanging bound GDP for free GTP, leading to regulate LC2A4/GLUT4 trafficking. In the absence of insulin, it maintains RAB31 in an active state and promotes a futile cycle between LC2A4/GLUT4 storage vesicles and early endosomes, retaining LC2A4/GLUT4 inside the cells. Upon insulin stimulation, it is translocated to the plasma membrane, releasing LC2A4/GLUT4 from intracellular storage vesicles. It is also involved in EGFR trafficking and degradation, possibly by promoting EGFR ubiquitination and subsequent degradation by the proteasome. It has GEF activity for Rab5 and GAP activity for Ras.

Synonyms:

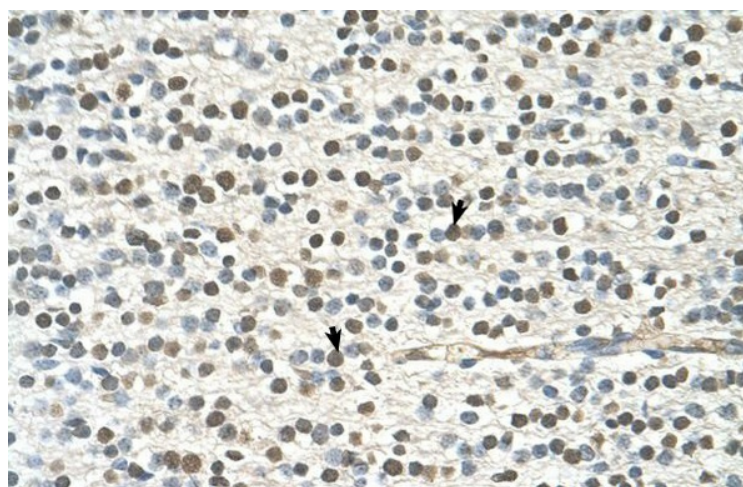
GAPex-5; GAPEX5; RAP6

Note:

Immunogen Sequence Homology: Dog: 100%; Pig: 100%; Rat: 100%; Horse: 100%; Human: 100%; Mouse: 100%; Bovine: 100%; Rabbit: 100%; Guinea pig: 100%; Zebrafish: 93%

Product images:

WB Suggested Anti-GAPVD1 Antibody Titration:
0.25 ug/ml; Positive Control: HepG2 cell lysate



Human Brain