

Product datasheet for **TA344117**

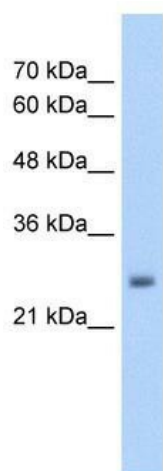
NELF (NSMF) Rabbit Polyclonal Antibody

Product data:

Product Type:	Primary Antibodies
Applications:	WB
Recommended Dilution:	WB
Reactivity:	Human
Host:	Rabbit
Isotype:	IgG
Clonality:	Polyclonal
Immunogen:	The immunogen for anti-NELF antibody: synthetic peptide directed towards the middle region of human NELF. Synthetic peptide located within the following region: RERSFSRSWSDPTPMKADTSHDSRDSSDLQSSHCTLDEAFEDLDWDTEKG
Formulation:	Liquid. Purified antibody supplied in 1x PBS buffer with 0.09% (w/v) sodium azide and 2% sucrose. <i>Note that this product is shipped as lyophilized powder to China customers.</i>
Purification:	Affinity Purified
Conjugation:	Unconjugated
Storage:	Store at -20°C as received.
Stability:	Stable for 12 months from date of receipt.
Predicted Protein Size:	29 kDa
Gene Name:	NMDA receptor synaptonuclear signaling and neuronal migration factor
Database Link:	NP_001124441 Entrez Gene 26012 Human Q6X4W1
Background:	NELF influences outgrowth of olfactory axons and migration of LHRH neurons.
Synonyms:	HH9; NELF
Note:	Immunogen Sequence Homology: Dog: 100%; Pig: 100%; Rat: 100%; Horse: 100%; Human: 100%; Mouse: 100%; Bovine: 100%; Rabbit: 100%; Guinea pig: 100%
Protein Families:	Druggable Genome



[View online »](#)

Product images:

WB Suggested Anti-NELF Antibody Titration: 5.0 ug/ml; Positive Control: HepG2 cell lysate; NSMF is supported by BioGPS gene expression data to be expressed in HepG2