

Product datasheet for **TA344115**

Nectin 3 (NECTIN3) Rabbit Polyclonal Antibody

Product data:

Product Type:	Primary Antibodies
Applications:	WB
Recommended Dilution:	WB
Reactivity:	Human
Host:	Rabbit
Isotype:	IgG
Clonality:	Polyclonal
Immunogen:	The immunogen for anti-PVRL3 antibody: synthetic peptide directed towards the middle region of human PVRL3. Synthetic peptide located within the following region: PDSVKKENKNPVNNLIRKDYLEEPEKTQWNNVENLNRFERPMDYYEDLKM
Formulation:	Liquid. Purified antibody supplied in 1x PBS buffer with 0.09% (w/v) sodium azide and 2% sucrose. <i>Note that this product is shipped as lyophilized powder to China customers.</i>
Purification:	Affinity Purified
Conjugation:	Unconjugated
Storage:	Store at -20°C as received.
Stability:	Stable for 12 months from date of receipt.
Predicted Protein Size:	61 kDa
Gene Name:	nectin cell adhesion molecule 3
Database Link:	NP_056295 Entrez Gene 25945 Human Q9NQS3
Background:	Nectins (e.g., PVRL1; MIM 600644) are immunoglobulin-like adhesion molecules that interact with afadin (AF6; MIM 159559). Afadin is an actin filament-binding protein that connects nectins to the actin cytoskeleton. The nectin-afadin system organizes adherens junctions cooperatively with the cadherin (see MIM 192090)-catenin (see MIM 116805) system in epithelial cells.
Synonyms:	CD113; CDW113; NECTIN-3; PPR3; PRR3; PVRR3



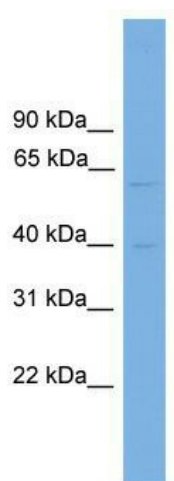
[View online »](#)

Note: Immunogen Sequence Homology: Dog: 100%; Pig: 100%; Rat: 100%; Human: 100%; Mouse: 100%; Bovine: 100%; Rabbit: 100%; Guinea pig: 100%

Protein Families: Druggable Genome, Transmembrane

Protein Pathways: Adherens junction, Cell adhesion molecules (CAMs)

Product images:



WB Suggested Anti-PVRL3 Antibody Titration: 0.2-1 ug/ml; ELISA Titer: 1: 62500; Positive Control: Hela cell lysate