

## Product datasheet for TA344112

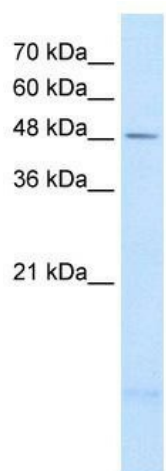
### PSD3 Rabbit Polyclonal Antibody

#### Product data:

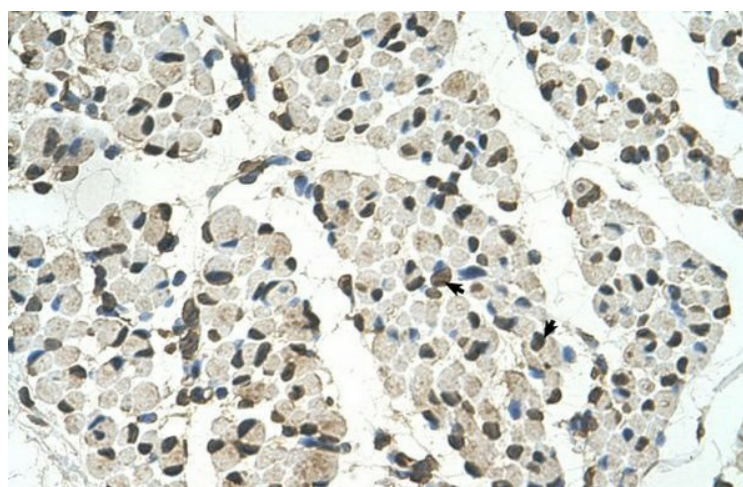
Product Type:	Primary Antibodies
Applications:	IHC, WB
Recommended Dilution:	WB, IHC
Reactivity:	Human
Host:	Rabbit
Isotype:	IgG
Clonality:	Polyclonal
Immunogen:	The immunogen for anti-PSD3 antibody: synthetic peptide directed towards the middle region of human PSD3. Synthetic peptide located within the following region: SDVAKHLGKNNFEFSKLVAAEEYLKFFDFTGMTLDQSLRYFFKAFSLVGETQ
Formulation:	Liquid. Purified antibody supplied in 1x PBS buffer with 0.09% (w/v) sodium azide and 2% sucrose. <i>Note that this product is shipped as lyophilized powder to China customers.</i>
Purification:	Affinity Purified
Conjugation:	Unconjugated
Storage:	Store at -20°C as received.
Stability:	Stable for 12 months from date of receipt.
Predicted Protein Size:	56 kDa
Gene Name:	pleckstrin and Sec7 domain containing 3
Database Link:	<a href="#">NP_996792</a> <a href="#">Entrez Gene 23362 Human</a> <a href="#">Q9NYI0</a>
Background:	PSD3 is a guanine nucleotide exchange factor for ARF6.
Synonyms:	EFA6D; EFA6R; HCA67
Note:	Immunogen Sequence Homology: Dog: 100%; Pig: 100%; Rat: 100%; Horse: 100%; Human: 100%; Mouse: 100%; Bovine: 100%; Rabbit: 100%; Guinea pig: 100%; Zebrafish: 93%
Protein Pathways:	Endocytosis



[View online »](#)

**Product images:**

WB Suggested Anti-PSD3 Antibody Titration: 2.5 ug/ml; Positive Control: A204 cell lysate; PSD3 is strongly supported by BioGPS gene expression data to be expressed in Human A204 cells



Human Muscle