

Product datasheet for **TA344110**

ACSL6 Rabbit Polyclonal Antibody

Product data:

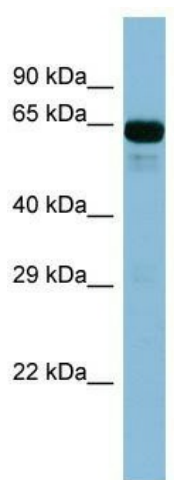
Product Type:	Primary Antibodies
Applications:	WB
Recommended Dilution:	WB
Reactivity:	Human
Host:	Rabbit
Isotype:	IgG
Clonality:	Polyclonal
Immunogen:	The immunogen for Anti-ACSL6 antibody is: synthetic peptide directed towards the middle region of Human ACSL6. Synthetic peptide located within the following region: GPGAIRYIINTADISTVIVDKPQKAVLLLEHVERKETPGLKLILMDPFE
Formulation:	Liquid. Purified antibody supplied in 1x PBS buffer with 0.09% (w/v) sodium azide and 2% sucrose. <i>Note that this product is shipped as lyophilized powder to China customers.</i>
Purification:	Affinity Purified
Conjugation:	Unconjugated
Storage:	Store at -20°C as received.
Stability:	Stable for 12 months from date of receipt.
Predicted Protein Size:	61 kDa
Gene Name:	acyl-CoA synthetase long-chain family member 6
Database Link:	NP_001009185 Entrez Gene 23305 Human Q9UKU0
Background:	The function of this protein remains unknown.
Synonyms:	ACS2; FACL6; LACS2; LACS5; LACS 6
Note:	Immunogen Sequence Homology: Dog: 100%; Pig: 100%; Rat: 100%; Horse: 100%; Human: 100%; Mouse: 100%; Bovine: 100%; Rabbit: 93%; Guinea pig: 93%
Protein Families:	Druggable Genome, Transmembrane



[View online »](#)

Protein Pathways: Adipocytokine signaling pathway, Fatty acid metabolism, Metabolic pathways, PPAR signaling pathway

Product images:



Host: Rabbit; Target Name: ACSL6; Sample Tissue: Fetal Kidney lysates; Antibody Dilution: 1.0 ug/ml