

## Product datasheet for **TA344108**

### **KIAA1486 (NYAP2) Rabbit Polyclonal Antibody**

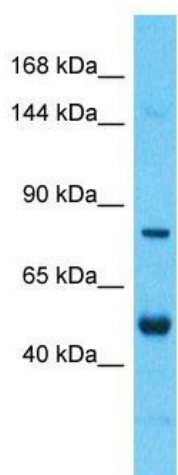
#### **Product data:**

<b>Product Type:</b>	Primary Antibodies
<b>Applications:</b>	WB
<b>Recommended Dilution:</b>	WB
<b>Reactivity:</b>	Human
<b>Host:</b>	Rabbit
<b>Isotype:</b>	IgG
<b>Clonality:</b>	Polyclonal
<b>Immunogen:</b>	The immunogen for Anti-NYAP2 antibody is: synthetic peptide directed towards the middle region of Human NYAP2. Synthetic peptide located within the following region: SSCGSRRQPPPKPKRDPSTKLSTSSSETVSSTAASKSGKTPERTEASAKPR
<b>Formulation:</b>	Liquid. Purified antibody supplied in 1x PBS buffer with 0.09% (w/v) sodium azide and 2% sucrose.
<b>Purification:</b>	Affinity Purified
<b>Conjugation:</b>	Unconjugated
<b>Storage:</b>	Store at -20°C as received.
<b>Stability:</b>	Stable for 12 months from date of receipt.
<b>Predicted Protein Size:</b>	71 kDa
<b>Gene Name:</b>	neuronal tyrosine-phosphorylated phosphoinositide-3-kinase adaptor 2
<b>Database Link:</b>	<a href="#">NP_065915</a> <a href="#">Entrez Gene 57624 Human</a> <a href="#">Q9P242</a>
<b>Background:</b>	NYAP2 activates PI3K and concomitantly recruits the WAVE1 complex to the close vicinity of PI3K and regulates neuronal morphogenesis.
<b>Synonyms:</b>	KIAA1486
<b>Note:</b>	Immunogen Sequence Homology: Pig: 100%; Rat: 100%; Human: 100%; Mouse: 100%; Zebrafish: 100%; Guinea pig: 100%; Dog: 93%; Horse: 93%; Bovine: 93%; Rabbit: 86%



[View online »](#)

## Product images:



Host: Rabbit  
Target Name: NYAP2  
Sample Tissue: Thymus Tumor Lysate  
Antibody Dilution: 1.0 $\mu$ g/ml

Host: Rabbit; Target Name: NYAP2; Sample Tissue: Thymus Tumor lysates; Antibody Dilution: 1.0 ug/ml