

Product datasheet for **TA344107**

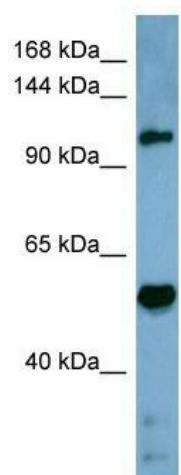
COBLL1 Rabbit Polyclonal Antibody

Product data:

Product Type:	Primary Antibodies
Applications:	WB
Recommended Dilution:	WB
Reactivity:	Human
Host:	Rabbit
Isotype:	IgG
Clonality:	Polyclonal
Immunogen:	The immunogen for anti-COBLL1 antibody: synthetic peptide directed towards the middle region of human COBLL1. Synthetic peptide located within the following region: QAKPSSFFLQMQRVSGHYVTSAAAKSVHAAPNPAPKELTNKEAERDMLP
Formulation:	Liquid. Purified antibody supplied in 1x PBS buffer with 0.09% (w/v) sodium azide and 2% sucrose. <i>Note that this product is shipped as lyophilized powder to China customers.</i>
Purification:	Affinity Purified
Conjugation:	Unconjugated
Storage:	Store at -20°C as received.
Stability:	Stable for 12 months from date of receipt.
Predicted Protein Size:	128 kDa
Gene Name:	cordons-bleu WH2 repeat protein like 1
Database Link:	NP_055715 Entrez Gene 22837 Human Q53SF7
Background:	The function of COBLL1 remains unknown.
Synonyms:	COBLR1
Note:	Immunogen Sequence Homology: Human: 100%; Rabbit: 86%; Dog: 79%



[View online »](#)

Product images:

WB Suggested Anti-COBLL1 Antibody Titration:
0.2-1 ug/ml; ELISA Titer: 1: 312500; Positive
Control: Human Stomach