

Product datasheet for **TA344106**

COBLL1 Rabbit Polyclonal Antibody

Product data:

Product Type:	Primary Antibodies
Applications:	IHC, WB
Recommended Dilution:	WB, IHC
Reactivity:	Human
Host:	Rabbit
Isotype:	IgG
Clonality:	Polyclonal
Immunogen:	The immunogen for anti-COBLL1 antibody: synthetic peptide directed towards the N terminal of human COBLL1. Synthetic peptide located within the following region: SAPATPLV NKHRPTFTRSN TISKPYISNTLPSDAPKRRAPLPPMPASQS
Formulation:	Liquid. Purified antibody supplied in 1x PBS buffer with 0.09% (w/v) sodium azide and 2% sucrose. <i>Note that this product is shipped as lyophilized powder to China customers.</i>
Purification:	Affinity Purified
Conjugation:	Unconjugated
Storage:	Store at -20°C as received.
Stability:	Stable for 12 months from date of receipt.
Predicted Protein Size:	128 kDa
Gene Name:	cordons-bleu WH2 repeat protein like 1
Database Link:	NP_055715 Entrez Gene 22837 Human Q53SF7
Background:	The function remains known.
Synonyms:	COBLR1
Note:	Immunogen Sequence Homology: Dog: 100%; Pig: 100%; Rat: 100%; Horse: 100%; Human: 100%; Mouse: 100%; Bovine: 100%; Rabbit: 100%; Guinea pig: 100%

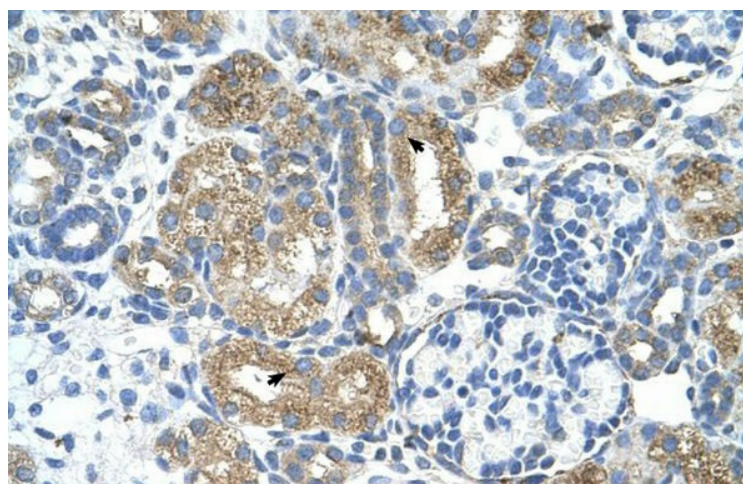


[View online »](#)

Product images:



WB Suggested Anti-COBLL1 Antibody Titration: 0.5 ug/ml; Positive Control: HepG2 cell lysate; COBLL1 is strongly supported by BioGPS gene expression data to be expressed in Human HepG2 cells



Human kidney