

Product datasheet for **TA344103**

TMCC2 Rabbit Polyclonal Antibody

Product data:

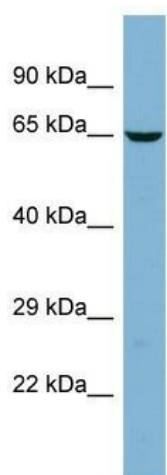
Product Type:	Primary Antibodies
Applications:	WB
Recommended Dilution:	WB
Reactivity:	Human
Host:	Rabbit
Isotype:	IgG
Clonality:	Polyclonal
Immunogen:	The immunogen for Anti-TMCC2 antibody is: synthetic peptide directed towards the middle region of Human TMCC2. Synthetic peptide located within the following region: KVDKGDLVALSPLPAGHGDTGPISLDVPDGPQRTKAAIDHLHQILK
Formulation:	Liquid. Purified antibody supplied in 1x PBS buffer with 0.09% (w/v) sodium azide and 2% sucrose. <i>Note that this product is shipped as lyophilized powder to China customers.</i>
Purification:	Affinity Purified
Conjugation:	Unconjugated
Storage:	Store at -20°C as received.
Stability:	Stable for 12 months from date of receipt.
Predicted Protein Size:	69 kDa
Gene Name:	transmembrane and coiled-coil domain family 2
Database Link:	NP_001229854 Entrez Gene 9911 Human O75069
Background:	TMCC2 is a multi-pass membrane protein. It belongs to the TEX28 family. The function of TMCC2 remains unknown.
Synonyms:	HUCEP11
Note:	Immunogen Sequence Homology: Dog: 100%; Pig: 100%; Rat: 100%; Horse: 100%; Human: 100%; Mouse: 100%; Bovine: 100%; Guinea pig: 100%; Rabbit: 93%



[View online »](#)

Protein Families: Transmembrane

Product images:



Host: Rabbit; Target Name: TMCC2; Sample Tissue: PANC1 Whole cell lysates; Antibody Dilution: 1.0 ug/ml