

## Product datasheet for **TA344102**

### TMCC2 Rabbit Polyclonal Antibody

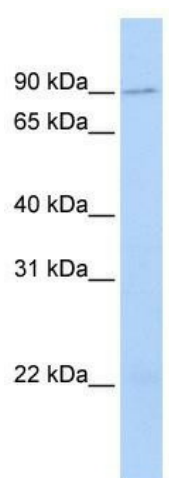
#### Product data:

Product Type:	Primary Antibodies
Applications:	WB
Recommended Dilution:	WB
Reactivity:	Human
Host:	Rabbit
Isotype:	IgG
Clonality:	Polyclonal
Immunogen:	The immunogen for anti-TMCC2 antibody: synthetic peptide directed towards the N terminal of human TMCC2. Synthetic peptide located within the following region: GETTGANSAGGPTSDAGAAAAPNPGPRSKPPDLKKIQLSEGSFMFGHGLK
Formulation:	Liquid. Purified antibody supplied in 1x PBS buffer with 0.09% (w/v) sodium azide and 2% sucrose.
Purification:	Affinity Purified
Conjugation:	Unconjugated
Storage:	Store at -20°C as received.
Stability:	Stable for 12 months from date of receipt.
Predicted Protein Size:	77 kDa
Gene Name:	transmembrane and coiled-coil domain family 2
Database Link:	<a href="#">NP_055673</a> <a href="#">Entrez Gene 9911 Human</a> <a href="#">O75069</a>
Background:	TMCC2 is a multi-pass membrane protein. It belongs to the TEX28 family. The function of TMCC2 remains unknown.
Synonyms:	HUCEP11
Note:	Immunogen Sequence Homology: Dog: 100%; Pig: 100%; Rat: 100%; Human: 100%; Mouse: 100%; Bovine: 100%; Guinea pig: 100%; Rabbit: 86%
Protein Families:	Transmembrane



[View online »](#)

## Product images:



WB Suggested Anti-TMCC2 Antibody Titration:  
0.2-1 ug/ml; ELISA Titer: 1: 312500; Positive  
Control: Hela cell lysate