

## Product datasheet for **TA344101**

### **RALGPS1 Rabbit Polyclonal Antibody**

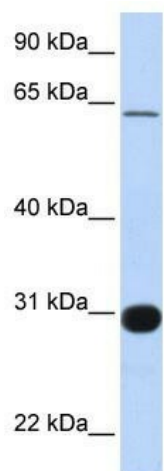
#### **Product data:**

<b>Product Type:</b>	Primary Antibodies
<b>Applications:</b>	WB
<b>Recommended Dilution:</b>	WB
<b>Reactivity:</b>	Human
<b>Host:</b>	Rabbit
<b>Isotype:</b>	IgG
<b>Clonality:</b>	Polyclonal
<b>Immunogen:</b>	The immunogen for anti-RALGPS1 antibody: synthetic peptide directed towards the middle region of human RALGPS1. Synthetic peptide located within the following region: AGSLPTPPVPRHRKSHSLGNMMMCQLSVESKSATFPSEKARHLLDDSVL
<b>Formulation:</b>	Liquid. Purified antibody supplied in 1x PBS buffer with 0.09% (w/v) sodium azide and 2% sucrose. <i>Note that this product is shipped as lyophilized powder to China customers.</i>
<b>Purification:</b>	Affinity Purified
<b>Conjugation:</b>	Unconjugated
<b>Storage:</b>	Store at -20°C as received.
<b>Stability:</b>	Stable for 12 months from date of receipt.
<b>Predicted Protein Size:</b>	62 kDa
<b>Gene Name:</b>	Ral GEF with PH domain and SH3 binding motif 1
<b>Database Link:</b>	<a href="#">NP_055451</a> <a href="#">Entrez Gene 9649 Human</a> <a href="#">Q5JS13</a>
<b>Background:</b>	RALGPS1 contains 1 PH domain and 1 Ras-GEF domain. RALGPS1 may be involved in cytoskeletal organization. It may also be involved in the stimulation of transcription in a Ras-independent fashion Guanine nucleotide exchange factor for the small GTPase RALA.
<b>Synonyms:</b>	RALGEF2; RALGPS1A
<b>Note:</b>	Immunogen Sequence Homology: Dog: 100%; Pig: 100%; Rat: 100%; Horse: 100%; Human: 100%; Mouse: 100%; Bovine: 100%; Rabbit: 100%; Guinea pig: 100%; Zebrafish: 76%



[View online »](#)

## Product images:



WB Suggested Anti-RALGPS1 Antibody Titration:  
0.2-1 ug/ml; Positive Control: Human brain