

Product datasheet for **TA344098**

ANGPTL3 Rabbit Polyclonal Antibody

Product data:

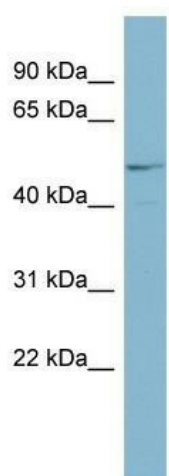
Product Type:	Primary Antibodies
Applications:	WB
Recommended Dilution:	WB
Reactivity:	Human
Host:	Rabbit
Isotype:	IgG
Clonality:	Polyclonal
Immunogen:	The immunogen for anti-ANGPTL3 antibody: synthetic peptide directed towards the N terminal of human ANGPTL3. Synthetic peptide located within the following region: IFQKLNIFDQSFYDLSLQTSEIKEEEKELRRTTYKLVKNEEVKNMSLEL
Formulation:	Liquid. Purified antibody supplied in 1x PBS buffer with 0.09% (w/v) sodium azide and 2% sucrose. <i>Note that this product is shipped as lyophilized powder to China customers.</i>
Purification:	Affinity Purified
Conjugation:	Unconjugated
Storage:	Store at -20°C as received.
Stability:	Stable for 12 months from date of receipt.
Predicted Protein Size:	51 kDa
Gene Name:	angiopoietin like 3
Database Link:	NP_055310 Entrez Gene 27329 Human Q9Y5C1
Background:	The protein encoded by this gene is a member of the angiopoietin-like family of secreted factors. It is predominantly expressed in the liver, and has the characteristic structure of angiopoietins, consisting of a signal peptide, N-terminal coiled-coil dom
Synonyms:	ANG-5; ANGPT5; ANL3; FHBL2
Note:	Immunogen Sequence Homology: Dog: 100%; Pig: 100%; Goat: 100%; Human: 100%; Mouse: 100%; Bovine: 100%; Rabbit: 100%; Rat: 93%; Horse: 93%; Guinea pig: 93%; Zebrafish: 86%



[View online »](#)

Protein Families: Druggable Genome, Secreted Protein

Product images:



WB Suggested Anti-ANGPTL3 Antibody Titration:
0.2-1 ug/ml; ELISA Titer: 1: 62500; Positive
Control: COLO205 cell lysate