

## Product datasheet for **TA344097**

### ANGPTL3 Rabbit Polyclonal Antibody

#### Product data:

Product Type:	Primary Antibodies
Applications:	WB
Recommended Dilution:	WB
Reactivity:	Human
Host:	Rabbit
Isotype:	IgG
Clonality:	Polyclonal
Immunogen:	The immunogen for anti-ANGPTL3 antibody: synthetic peptide directed towards the N terminal of human ANGPTL3. Synthetic peptide located within the following region: VKILANGLLQLGHGLKDFVHKTKGQINDIFQKLNIFDQSFYDLSLQTSEI
Formulation:	Liquid. Purified antibody supplied in 1x PBS buffer with 0.09% (w/v) sodium azide and 2% sucrose. <i>Note that this product is shipped as lyophilized powder to China customers.</i>
Purification:	Affinity Purified
Conjugation:	Unconjugated
Storage:	Store at -20°C as received.
Stability:	Stable for 12 months from date of receipt.
Predicted Protein Size:	51 kDa
Gene Name:	angiopoietin like 3
Database Link:	<a href="#">NP_055310</a> <a href="#">Entrez Gene 27329 Human Q9Y5C1</a>
Background:	The protein encoded by this gene is a member of the angiopoietin-like family of secreted factors. It is predominantly expressed in the liver, and has the characteristic structure of angiopoietins, consisting of a signal peptide, N-terminal coiled-coil domain and the C-terminal fibrinogen (FBN)-like domain. The FBN-like domain in angiopoietin-like 3 protein was shown to bind alpha-5/beta-3 integrins, and this binding induced endothelial cell adhesion and migration. This protein may also play a role in the regulation of angiogenesis.



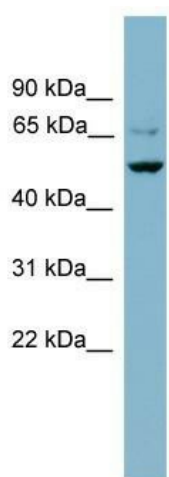
[View online »](#)

**Synonyms:** ANG-5; ANGPT5; ANL3; FHBL2

**Note:** Immunogen Sequence Homology: Dog: 100%; Pig: 100%; Rat: 100%; Goat: 100%; Horse: 100%; Human: 100%; Mouse: 100%; Bovine: 100%; Rabbit: 100%

**Protein Families:** Druggable Genome, Secreted Protein

**Product images:**



WB Suggested Anti-ANGPTL3 Antibody Titration:  
0.2-1 ug/ml; ELISA Titer: 1: 1562500; Positive  
Control: NCI-H226 cell lysate