

## Product datasheet for **TA344096**

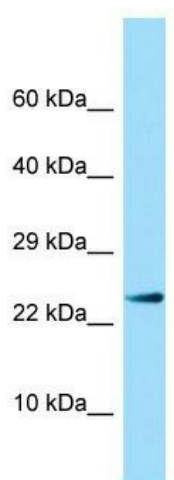
### IL17b Rabbit Polyclonal Antibody

#### Product data:

Product Type:	Primary Antibodies
Applications:	WB
Recommended Dilution:	WB
Reactivity:	Rat
Host:	Rabbit
Isotype:	IgG
Clonality:	Polyclonal
Immunogen:	The immunogen for Anti-IL17b antibody is: synthetic peptide directed towards the N-terminal region of Rat IL17b. Synthetic peptide located within the following region: LLAISIFLVPSQPRNTKGKRKGQGRPGPLAPGPHQVPLDLVSRVKPYARM
Formulation:	Liquid. Purified antibody supplied in 1x PBS buffer with 0.09% (w/v) sodium azide and 2% sucrose. <i>Note that this product is shipped as lyophilized powder to China customers.</i>
Purification:	Affinity Purified
Conjugation:	Unconjugated
Storage:	Store at -20°C as received.
Stability:	Stable for 12 months from date of receipt.
Predicted Protein Size:	19 kDa
Gene Name:	interleukin 17B
Database Link:	<a href="#">NP_446241</a> <a href="#">Entrez Gene 116472 Rat</a>
Background:	Human homolog is a T cell-derived cytokine that may be involved in the proinflammatory response.
Synonyms:	IL-17B; IL-20; IL20; Interleukin-20; MGC138900; MGC138901; NIRF; ZCYTO7
Note:	Immunogen Sequence Homology: Dog: 100%; Rat: 100%; Human: 100%; Mouse: 100%; Pig: 93%; Bovine: 93%; Guinea pig: 92%; Rabbit: 85%; Yeast: 79%



[View online »](#)

**Product images:**

Host: Rabbit; Target Name: Il17b; Sample Tissue: Rat Pancreas lysates; Antibody Dilution: 1.0 ug/ml