

## Product datasheet for **TA344094**

### EIF2AK1 Rabbit Polyclonal Antibody

#### Product data:

Product Type:	Primary Antibodies
Applications:	WB
Recommended Dilution:	WB, IHC
Reactivity:	Human
Host:	Rabbit
Isotype:	IgG
Clonality:	Polyclonal
Immunogen:	The immunogen for anti-EIF2AK1 antibody: synthetic peptide directed towards the N terminal of human EIF2AK1. Synthetic peptide located within the following region: TCSDEFSSLRLHHNRAITHLMRSAKERVRQDPCEDISRIQKIRSREVALE
Formulation:	Liquid. Purified antibody supplied in 1x PBS buffer with 0.09% (w/v) sodium azide and 2% sucrose. <i>Note that this product is shipped as lyophilized powder to China customers.</i>
Purification:	Affinity Purified
Conjugation:	Unconjugated
Storage:	Store at -20°C as received.
Stability:	Stable for 12 months from date of receipt.
Predicted Protein Size:	71 kDa
Gene Name:	eukaryotic translation initiation factor 2 alpha kinase 1
Database Link:	<a href="#">NP_055228</a> <a href="#">Entrez Gene 27102 Human</a> <a href="#">Q9BQI3</a>



[View online »](#)

**Background:**

EIF2AK1 acts at the level of translation initiation to downregulate protein synthesis in response to stress. The protein is a kinase that can be inactivated by hemin. Two transcript variants encoding different isoforms have been found for this gene. The HRI gene is localized to 7p22 where its 3' end slightly overlaps the 3' end of the gene JTV1. The two genes are transcribed from opposite strands. Studies in rat and rabbit suggest that the HRI gene product phosphorylates the alpha subunit of eukaryotic initiation factor 2. Its kinase activity is induced by low levels of heme and inhibited by the presence of heme. Sequence Note: The sequence AF181071.1 is a chimeric mRNA clone. Only the heme-regulated initiation factor 2-alpha kinase region was propagated into this RefSeq record.

**Synonyms:**

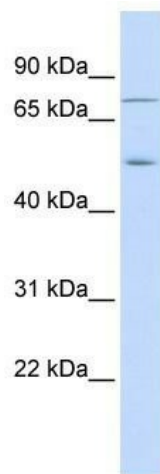
HCR; HRI

**Note:**

Immunogen Sequence Homology: Dog: 100%; Pig: 100%; Rat: 100%; Horse: 100%; Human: 100%; Mouse: 100%; Bovine: 100%; Rabbit: 100%; Guinea pig: 100%; Zebrafish: 79%

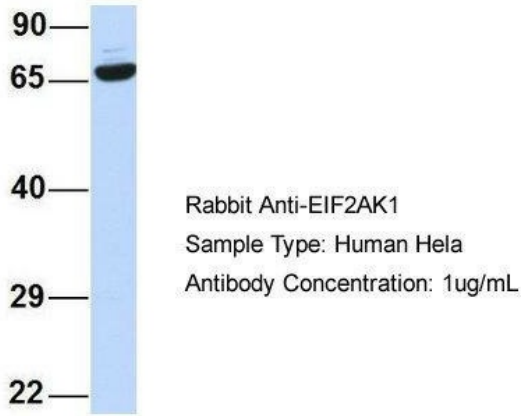
**Protein Families:**

Druggable Genome, Protein Kinase

**Product images:**

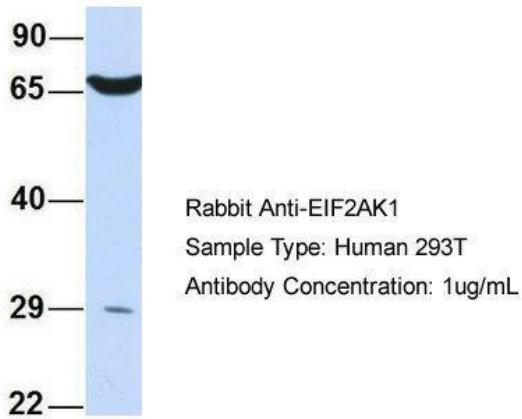
WB Suggested Anti-EIF2AK1 Antibody Titration:  
0.2-1 ug/ml; ELISA Titer: 1: 62500; Positive  
Control: Human Lung

## EIF2AK1



Host: Rabbit; Target Name: EIF2AK1; Sample Tissue: Human HeLa; Antibody Dilution: 1.0 ug/ml; EIF2AK1 is strongly supported by BioGPS gene expression data to be expressed in HeLa

## EIF2AK1



Host: Rabbit; Target Name: EIF2AK1; Sample Tissue: Human 293T; Antibody Dilution: 1.0 ug/ml; EIF2AK1 is strongly supported by BioGPS gene expression data to be expressed in Human HEK293T cells