

Product datasheet for **TA344091**

WDR9 (BRWD1) Rabbit Polyclonal Antibody

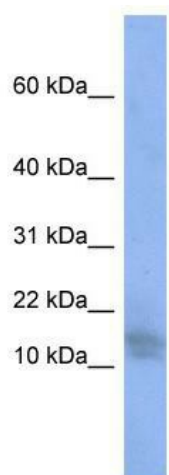
Product data:

Product Type:	Primary Antibodies
Applications:	WB
Recommended Dilution:	WB
Reactivity:	Human
Host:	Rabbit
Isotype:	IgG
Clonality:	Polyclonal
Immunogen:	The immunogen for anti-BRWD1 antibody: synthetic peptide directed towards the N terminal of human BRWD1. Synthetic peptide located within the following region: MAEPSSARRPVPLIESELYFLIARYLSAGPCRRAAQVLVQELEQYQLLPK
Formulation:	Liquid. Purified antibody supplied in 1x PBS buffer with 0.09% (w/v) sodium azide and 2% sucrose. <i>Note that this product is shipped as lyophilized powder to China customers.</i>
Purification:	Affinity Purified
Conjugation:	Unconjugated
Storage:	Store at -20°C as received.
Stability:	Stable for 12 months from date of receipt.
Predicted Protein Size:	13 kDa
Gene Name:	bromodomain and WD repeat domain containing 1
Database Link:	NP_001007247 Entrez Gene 54014 Human Q9NSI6
Background:	This gene encodes a member of the WD repeat protein family. WD repeats are minimally conserved regions of approximately 40 amino acids typically bracketed by gly-his and trp-aspartic acid (GH-WD), which may facilitate formation of heterotrimeric or multiprotein complex
Synonyms:	C21orf107; DCAF19; N143; WDR9
Note:	Immunogen Sequence Homology: Human: 100%; Pig: 93%; Rat: 93%; Horse: 93%; Mouse: 93%; Bovine: 93%; Guinea pig: 92%; Dog: 86%



[View online »](#)

Product images:



WB Suggested Anti-BRWD1 Antibody Titration:
0.2-1 ug/ml; ELISA Titer: 1: 312500; Positive
Control: PANC1 cell lysate