

Product datasheet for **TA344090**

GIPC3 Rabbit Polyclonal Antibody

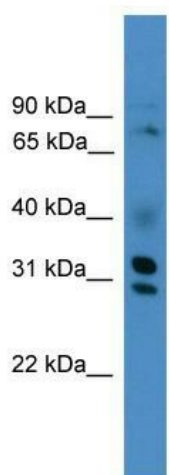
Product data:

Product Type:	Primary Antibodies
Applications:	WB
Recommended Dilution:	WB
Reactivity:	Human
Host:	Rabbit
Isotype:	IgG
Clonality:	Polyclonal
Immunogen:	The immunogen for anti-GIPC3 antibody: synthetic peptide directed towards the middle region of human GIPC3. Synthetic peptide located within the following region: TLRLRSGGAATVEEAPSEFEEEEASRKVDDLLESYMGIRDPELASTMVETS
Formulation:	Liquid. Purified antibody supplied in 1x PBS buffer with 0.09% (w/v) sodium azide and 2% sucrose.
Purification:	Affinity Purified
Conjugation:	Unconjugated
Storage:	Store at -20°C as received.
Stability:	Stable for 12 months from date of receipt.
Predicted Protein Size:	34 kDa
Gene Name:	GIPC PDZ domain containing family member 3
Database Link:	NP_573568 Entrez Gene 126326 Human Q8TF64
Background:	The function of GIPC3 remains unknown.
Synonyms:	C19orf64; DFNB15; DFNB72; DFNB95
Note:	Immunogen Sequence Homology: Human: 100%; Dog: 92%; Rat: 90%; Pig: 85%; Guinea pig: 85%



[View online »](#)

Product images:



WB Suggested Anti-GIPC3 Antibody Titration: 0.2-1 ug/ml; ELISA Titer: 1: 62500; Positive Control: THP-1 cell lysate