

Product datasheet for **TA344088**

NKD2 Rabbit Polyclonal Antibody

Product data:

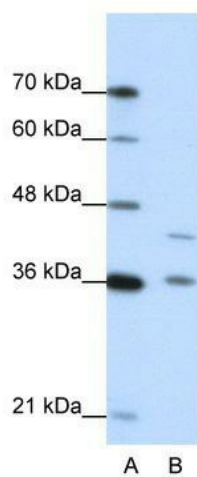
| | |
|-------------------------|---|
| Product Type: | Primary Antibodies |
| Applications: | WB |
| Recommended Dilution: | WB |
| Reactivity: | Human |
| Host: | Rabbit |
| Isotype: | IgG |
| Clonality: | Polyclonal |
| Immunogen: | The immunogen for anti-NKD2 antibody: synthetic peptide directed towards the N terminal of human NKD2. Synthetic peptide located within the following region: ARDKQELPNGDPKEGPFREDQCPLQVALPAEKAEGREHPGQLLSADDGER |
| Formulation: | Liquid. Purified antibody supplied in 1x PBS buffer with 0.09% (w/v) sodium azide and 2% sucrose. <i>Note that this product is shipped as lyophilized powder to China customers.</i> |
| Purification: | Affinity Purified |
| Conjugation: | Unconjugated |
| Storage: | Store at -20°C as received. |
| Stability: | Stable for 12 months from date of receipt. |
| Predicted Protein Size: | 34 kDa |
| Gene Name: | naked cuticle homolog 2 |
| Database Link: | NP_149111 Entrez Gene 85409 Human Q969F2 |
| Background: | In the mouse, Nkd is a Dishevelled-binding protein that functions as a negative regulator of the Wnt-beta-catenin-Tcf signaling pathway. |
| Synonyms: | Naked2 |
| Note: | Immunogen Sequence Homology: Rat: 100%; Human: 100%; Mouse: 92%; Horse: 90% |
| Protein Families: | Druggable Genome |



[View online »](#)

Protein Pathways: Wnt signaling pathway

Product images:



WB Suggested Anti-NKD2 Antibody Titration: 0.2-1 ug/ml; Positive Control: Jurkat cell lysate