

Product datasheet for **TA344087**

Naked1 (NKD1) Rabbit Polyclonal Antibody

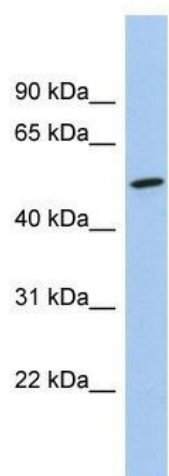
Product data:

| | |
|-------------------------|--|
| Product Type: | Primary Antibodies |
| Applications: | WB |
| Recommended Dilution: | WB |
| Reactivity: | Human |
| Host: | Rabbit |
| Isotype: | IgG |
| Clonality: | Polyclonal |
| Immunogen: | The immunogen for anti-NKD1 antibody: synthetic peptide directed towards the middle region of human NKD1. Synthetic peptide located within the following region: LASGGPVLGREHLRELPALVYESQAGQPVRHEHHHHHEHHHHYHHFYQ |
| Formulation: | Liquid. Purified antibody supplied in 1x PBS buffer with 0.09% (w/v) sodium azide and 2% sucrose. |
| Purification: | Affinity Purified |
| Conjugation: | Unconjugated |
| Storage: | Store at -20°C as received. |
| Stability: | Stable for 12 months from date of receipt. |
| Predicted Protein Size: | 52 kDa |
| Gene Name: | naked cuticle homolog 1 |
| Database Link: | NP_149110 Entrez Gene 85407 Human Q969G9 |
| Background: | In the mouse, Nkd is a Dishevelled -binding protein that functions as a negative regulator of the Wnt-beta-catenin -Tcf signaling pathway. |
| Synonyms: | Naked1 |
| Note: | Immunogen Sequence Homology: Human: 100%; Rat: 93%; Horse: 93%; Mouse: 93%; Bovine: 93%; Rabbit: 93%; Pig: 92%; Guinea pig: 92%; Dog: 86% |
| Protein Families: | Druggable Genome |


[View online »](#)

Protein Pathways: Wnt signaling pathway

Product images:



WB Suggested Anti-NKD1 Antibody Titration: 0.2-1 ug/ml; Positive Control: 721_B cell lysate