

Product datasheet for **TA344083**

MFRP Rabbit Polyclonal Antibody

Product data:

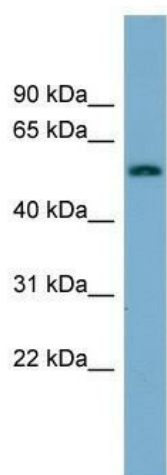
Product Type:	Primary Antibodies
Applications:	WB
Recommended Dilution:	WB
Reactivity:	Human
Host:	Rabbit
Isotype:	IgG
Clonality:	Polyclonal
Immunogen:	The immunogen for anti-MFRP antibody: synthetic peptide directed towards the N terminal of human MFRP. Synthetic peptide located within the following region: TCGGLLSGPRGFFSSPNYPDPYPPNTHCVWHIQVATDHAIQLKIEALSIE
Formulation:	Liquid. Purified antibody supplied in 1x PBS buffer with 0.09% (w/v) sodium azide and 2% sucrose.
Purification:	Affinity Purified
Conjugation:	Unconjugated
Storage:	Store at -20°C as received.
Stability:	Stable for 12 months from date of receipt.
Predicted Protein Size:	62 kDa
Gene Name:	membrane frizzled-related protein
Database Link:	NP_113621 Entrez Gene 83552 Human Q9BY79
Background:	MFRP is a member of the frizzled-related proteins. It may play a role in eye development, as mutations in this gene have been associated with nanophthalmos, posterior microphthalmia, retinitis pigmentosa, foveoschisis, and optic disc drusen. The protein i
Synonyms:	MCOP5; NNO2; RD6
Note:	Immunogen Sequence Homology: Human: 100%; Pig: 93%; Rat: 93%; Horse: 93%; Bovine: 93%; Rabbit: 93%; Guinea pig: 93%; Mouse: 86%



[View online »](#)

Protein Families: Druggable Genome, Transmembrane

Product images:



WB Suggested Anti-MFRP Antibody Titration: 0.2-1 ug/ml; Positive Control: Human kidney