

Product datasheet for **TA344080**

Wnt10a Rabbit Polyclonal Antibody

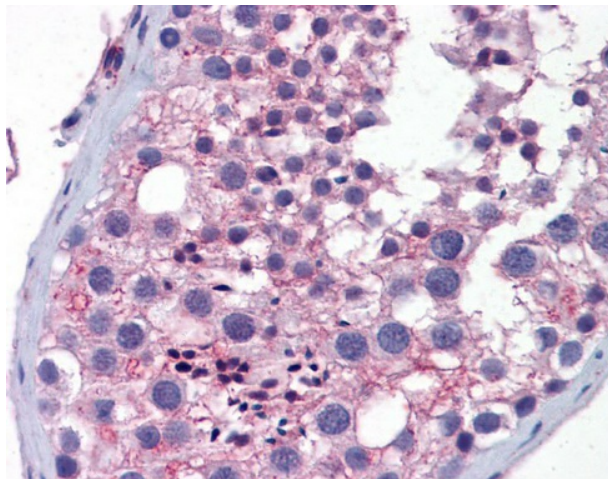
Product data:

Product Type:	Primary Antibodies
Applications:	IHC
Recommended Dilution:	WB, IHC
Reactivity:	Human
Host:	Rabbit
Isotype:	IgG
Clonality:	Polyclonal
Immunogen:	The immunogen for anti-Wnt10a antibody: synthetic peptide corresponding to a region of Mouse. Synthetic peptide located within the following region: RDQRWNCSSLETRNKVPYESPIFSRGRFRESAFAYAIAAAGVVHAVSNACA
Formulation:	Liquid. Purified antibody supplied in 1x PBS buffer with 0.09% (w/v) sodium azide and 2% sucrose. <i>Note that this product is shipped as lyophilized powder to China customers.</i>
Purification:	Affinity Purified
Conjugation:	Unconjugated
Storage:	Store at -20°C as received.
Stability:	Stable for 12 months from date of receipt.
Predicted Protein Size:	46 kDa
Gene Name:	wingless-type MMTV integration site family, member 10A
Database Link:	NP_033544 Entrez Gene 80326 Human P70701
Background:	Wnt10a is the ligand for members of the frizzled family of seven transmembrane receptors. Wnt10a is a probable developmental protein. Wnt10a may be a signaling molecule important in CNS development. Wnt10a is likely to signal over only few cell diameters.
Synonyms:	FLJ14301; SSPS
Note:	Immunogen Sequence Homology: Dog: 100%; Pig: 100%; Rat: 100%; Human: 100%; Bovine: 100%; Rabbit: 100%; Zebrafish: 100%; Guinea pig: 100%; Mouse: 93%



[View online »](#)

Product images:



Testis