

Product datasheet for **TA344078**

WNT2B Rabbit Polyclonal Antibody

Product data:

Product Type:	Primary Antibodies
Applications:	IHC, WB
Recommended Dilution:	WB, IHC
Reactivity:	Human
Host:	Rabbit
Isotype:	IgG
Clonality:	Polyclonal
Immunogen:	The immunogen for anti-WNT2B antibody: synthetic peptide directed towards the N terminal of human WNT2B. Synthetic peptide located within the following region: LRPGGAEAAQLPLRRASAPVVPSPAAPDGSRASARLGLACLLLLLLL
Formulation:	Liquid. Purified antibody supplied in 1x PBS buffer with 0.09% (w/v) sodium azide and 2% sucrose. <i>Note that this product is shipped as lyophilized powder to China customers.</i>
Purification:	Affinity Purified
Conjugation:	Unconjugated
Storage:	Store at -20°C as received.
Stability:	Stable for 12 months from date of receipt.
Predicted Protein Size:	44 kDa
Gene Name:	Wnt family member 2B
Database Link:	NP_078613 Entrez Gene 7482 Human Q93097



[View online »](#)

Background:

This protein is a member of the wingless-type MMTV integration site (WNT) family of highly conserved, secreted signaling factors. WNT family members function in a variety of developmental processes including regulation of cell growth and differentiation and are characterized by a WNT-core domain. It may play a role in human development as well as human carcinogenesis. This gene encodes a member of the wingless-type MMTV integration site (WNT) family of highly conserved, secreted signaling factors. WNT family members function in a variety of developmental processes including regulation of cell growth and differentiation and are characterized by a WNT-core domain. This gene may play a role in human development as well as human carcinogenesis. This gene produces two alternative transcript variants.

Synonyms:

WNT13

Note:

Immunogen Sequence Homology: Pig: 100%; Human: 100%; Guinea pig: 100%; Bovine: 93%; Rabbit: 93%

Protein Families:

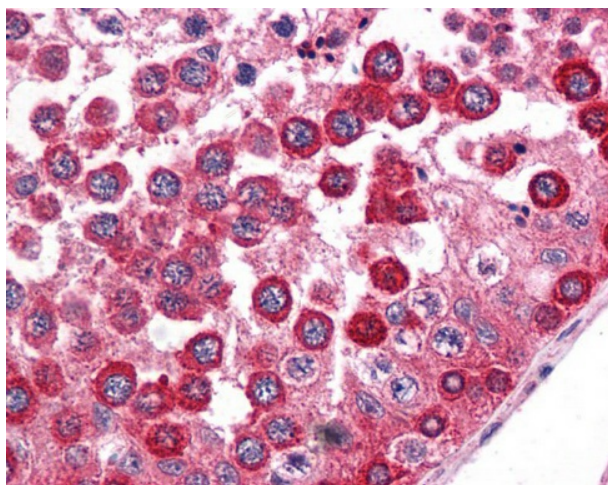
Secreted Protein

Protein Pathways:

Basal cell carcinoma, Hedgehog signaling pathway, Melanogenesis, Pathways in cancer, Wnt signaling pathway

Product images:

WB Suggested Anti-WNT2B Antibody Titration:
0.2-1 ug/ml; ELISA Titer: 1: 62500; Positive
Control: Transfected 293T



Testis