

Product datasheet for **TA344077**

WRCH1 (RHOU) Rabbit Polyclonal Antibody

Product data:

Product Type:	Primary Antibodies
Applications:	WB
Recommended Dilution:	WB
Reactivity:	Human
Host:	Rabbit
Isotype:	IgG
Clonality:	Polyclonal
Immunogen:	The immunogen for anti-RHOU antibody: synthetic peptide directed towards the C terminal of human RHOU. Synthetic peptide located within the following region: LKEVFDAAIVAGIQYSDTQQPKKSKSRTPDKMKNLSKSWWKYCCFV
Formulation:	Liquid. Purified antibody supplied in 1x PBS buffer with 0.09% (w/v) sodium azide and 2% sucrose.
Purification:	Affinity Purified
Conjugation:	Unconjugated
Storage:	Store at -20°C as received.
Stability:	Stable for 12 months from date of receipt.
Predicted Protein Size:	28 kDa
Gene Name:	ras homolog family member U
Database Link:	NP_067028 Entrez Gene 58480 Human Q7L0Q8
Background:	RHOU is a member of the Rho family of GTPases. It can activate PAK1 and JNK1, and can induce filopodium formation and stress fiber dissolution. It may also mediate the effects of WNT1 signaling in the regulation of cell morphology, cytoskeletal organization, and cell proliferation. This gene encodes a member of the Rho family of GTPases. This protein can activate PAK1 and JNK1, and can induce filopodium formation and stress fiber dissolution. It may also mediate the effects of WNT1 signaling in the regulation of cell morphology, cytoskeletal organization, and cell proliferation.



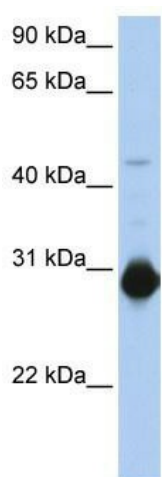
[View online »](#)

Synonyms: ARHU; CDC42L1; G28K; hG28K; WRCH1

Note: Immunogen Sequence Homology: Dog: 100%; Pig: 100%; Horse: 100%; Human: 100%; Bovine: 100%; Rabbit: 100%; Mouse: 93%; Rat: 79%; Guinea pig: 79%

Protein Families: Druggable Genome

Product images:



WB Suggested Anti-RHOU Antibody Titration: 0.2-1 ug/ml; Positive Control: Human Muscle