

Product datasheet for **TA344076**

GIPC (GIPC2) Rabbit Polyclonal Antibody

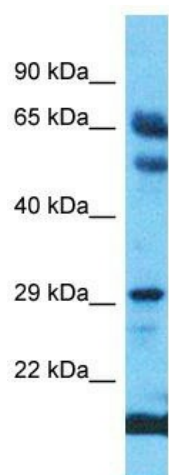
Product data:

Product Type:	Primary Antibodies
Applications:	WB
Recommended Dilution:	WB
Reactivity:	Human
Host:	Rabbit
Isotype:	IgG
Clonality:	Polyclonal
Immunogen:	The immunogen for Anti-GIPC2 antibody is: synthetic peptide directed towards the C-terminal region of Human GIPC2. Synthetic peptide located within the following region: KAKAIEKIDDVLELYMGIRDIDLATTMFEAGKDKVNPDEFAVALDELGD
Formulation:	Liquid. Purified antibody supplied in 1x PBS buffer with 0.09% (w/v) sodium azide and 2% sucrose.
Purification:	Affinity Purified
Conjugation:	Unconjugated
Storage:	Store at -20°C as received.
Stability:	Stable for 12 months from date of receipt.
Predicted Protein Size:	34 kDa
Gene Name:	GIPC PDZ domain containing family member 2
Database Link:	NP_060125 Entrez Gene 54810 Human Q8TF65
Background:	GIPC1/GIPC, GIPC2, and GIPC3 are a family of central PDZ-domain proteins. GIPC2 might play important roles in human gastric cancer through modulation of growth factor signaling or cell adhesion. GIPC1, GIPC2 and GIPC3 might play key roles in carcinogenesis and embryogenesis through modulation of growth factor signaling and cell adhesion.
Synonyms:	SEMCAP-2; SEMCAP2
Note:	Immunogen Sequence Homology: Dog: 100%; Human: 100%; Pig: 93%; Rat: 93%; Horse: 93%; Mouse: 93%; Bovine: 93%; Guinea pig: 93%; Rabbit: 86%; Zebrafish: 85%



[View online »](#)

Product images:



Host: Rabbit

Target Name: GIPC2

Sample Tissue: Esophagus Tumor Lysate

Antibody Dilution: 1.0 μ g/ml

Host: Rabbit; Target Name: GIPC2; Sample Tissue: Esophagus Tumor lysates; Antibody Dilution: 1.0 μ g/ml