

## Product datasheet for **TA344070**

### Wnt11 Rabbit Polyclonal Antibody

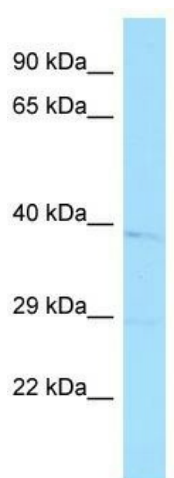
#### Product data:

Product Type:	Primary Antibodies
Applications:	WB
Recommended Dilution:	WB
Reactivity:	Human, Mouse
Host:	Rabbit
Isotype:	IgG
Clonality:	Polyclonal
Immunogen:	The immunogen for Anti-Wnt11 antibody is: synthetic peptide directed towards the middle region of Mouse Wnt11. Synthetic peptide located within the following region: PGCSCGPVPGEPGPGNRWGGCADNLSYGLLMGAKFSDAPMKVKKTGSQA
Formulation:	Liquid. Purified antibody supplied in 1x PBS buffer with 0.09% (w/v) sodium azide and 2% sucrose. <i>Note that this product is shipped as lyophilized powder to China customers.</i>
Purification:	Affinity Purified
Conjugation:	Unconjugated
Storage:	Store at -20°C as received.
Stability:	Stable for 12 months from date of receipt.
Predicted Protein Size:	39 kDa
Gene Name:	wingless-type MMTV integration site family, member 11
Database Link:	<a href="#">NP_033545</a> <a href="#">Entrez Gene 7481 Human</a> <a href="#">Entrez Gene 22411 Mouse</a> <a href="#">P48615</a>
Background:	The function of this protein remains unknown.
Synonyms:	HWNT11; MGC141946; MGC141948
Note:	Immunogen Sequence Homology: Dog: 100%; Pig: 100%; Rat: 100%; Horse: 100%; Human: 100%; Mouse: 100%; Bovine: 100%; Rabbit: 100%; Guinea pig: 100%



[View online »](#)

## Product images:



Host: Rabbit; Target Name: Wnt11; Sample  
Tissue: Mouse Stomach lysates; Antibody  
Dilution: 1.0 ug/ml