

Product datasheet for **TA344061**

WNT9B Rabbit Polyclonal Antibody

Product data:

Product Type:	Primary Antibodies
Applications:	IHC, WB
Recommended Dilution:	WB, IHC
Reactivity:	Human
Host:	Rabbit
Isotype:	IgG
Clonality:	Polyclonal
Immunogen:	The immunogen for anti-WNT9B antibody: synthetic peptide directed towards the C terminal of human WNT9B. Synthetic peptide located within the following region: FRETGQVLKLRYSKAVKSSATNEALGRLELWAPARQGLTKGLAPRSGD
Formulation:	Liquid. Purified antibody supplied in 1x PBS buffer with 0.09% (w/v) sodium azide and 2% sucrose. <i>Note that this product is shipped as lyophilized powder to China customers.</i>
Purification:	Protein A purified
Conjugation:	Unconjugated
Storage:	Store at -20°C as received.
Stability:	Stable for 12 months from date of receipt.
Predicted Protein Size:	39 kDa
Gene Name:	Wnt family member 9B
Database Link:	NP_003387 Entrez Gene 7484 Human O14905



[View online »](#)

Background:

WNT9B is a member of the WNT family. They are secreted signaling proteins. These proteins have been implicated in oncogenesis and in several developmental processes, including regulation of cell fate and patterning during embryogenesis. The WNT gene family consists of structurally related genes that encode secreted signaling proteins. These proteins have been implicated in oncogenesis and in several developmental processes, including regulation of cell fate and patterning during embryogenesis. This gene is a member of the WNT gene family. Study of its expression in the teratocarcinoma cell line NT2 suggests that it may be implicated in the early process of neuronal differentiation of NT2 cells induced by retinoic acid. This gene is clustered with WNT3, another family member, in the chromosome 17q21 region.

Synonyms:

WNT14B; WNT15

Note:

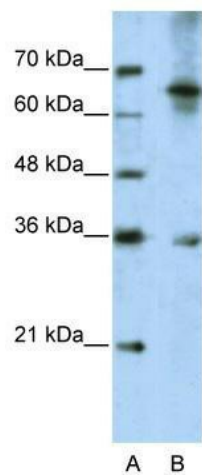
Immunogen Sequence Homology: Human: 100%

Protein Families:

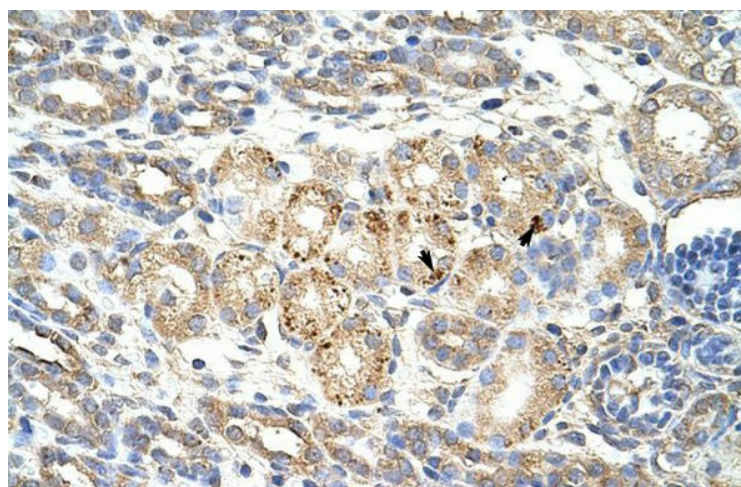
Secreted Protein, Transmembrane

Protein Pathways:

Basal cell carcinoma, Hedgehog signaling pathway, Melanogenesis, Pathways in cancer, Wnt signaling pathway

Product images:

WB Suggested Anti-WNT9B Antibody Titration: 5.0 ug/ml; ELISA Titer: 1: 1562500; Positive Control: Jurkat cell lysate



Rabbit Anti-WNT9B Antibody; Paraffin Embedded Tissue: Human Kidney; Cellular Data: Epithelial cells of renal tubule; Antibody Concentration: 4.0-8.0 ug/ml; Magnification: 400X