

## Product datasheet for **TA344055**

### MBNL1 Rabbit Polyclonal Antibody

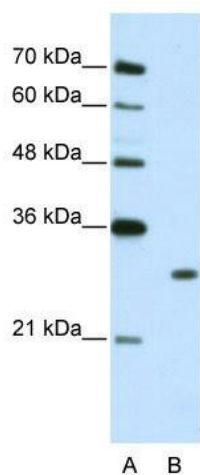
#### Product data:

Product Type:	Primary Antibodies
Applications:	WB
Recommended Dilution:	WB
Reactivity:	Human
Host:	Rabbit
Isotype:	IgG
Clonality:	Polyclonal
Immunogen:	The immunogen for anti-MBNL1 antibody: synthetic peptide directed towards the C terminal of human MBNL1. Synthetic peptide located within the following region: LCPQQQHLPQVFPSPQQPTSPILDASTLLGATSCPAAAAGKMPIISA
Formulation:	Liquid. Purified antibody supplied in 1x PBS buffer with 0.09% (w/v) sodium azide and 2% sucrose. <i>Note that this product is shipped as lyophilized powder to China customers.</i>
Purification:	Protein A purified
Conjugation:	Unconjugated
Storage:	Store at -20°C as received.
Stability:	Stable for 12 months from date of receipt.
Predicted Protein Size:	37 kDa
Gene Name:	muscleblind like splicing regulator 1
Database Link:	<a href="#">NP_997179</a> <a href="#">Entrez Gene 4154 Human</a> <a href="#">Q9NR56</a>
Background:	MBNL1 contains 4 C3H1-type zinc fingers and binds to CUG triplet repeat expansion dsRNA.
Synonyms:	EXP; EXP35; EXP40; EXP42; MBNL
Note:	Immunogen Sequence Homology: Human: 100%; Rat: 83%



[View online »](#)

## Product images:



WB Suggested Anti-MBNL1 Antibody Titration: 2.5 ug/ml; ELISA Titer: 1: 62500; Positive Control: Jurkat cell lysate. MBNL1 is strongly supported by BioGPS gene expression data to be expressed in Human Jurkat cells