

Product datasheet for **TA344054**

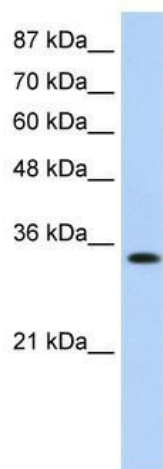
MBNL1 Rabbit Polyclonal Antibody

Product data:

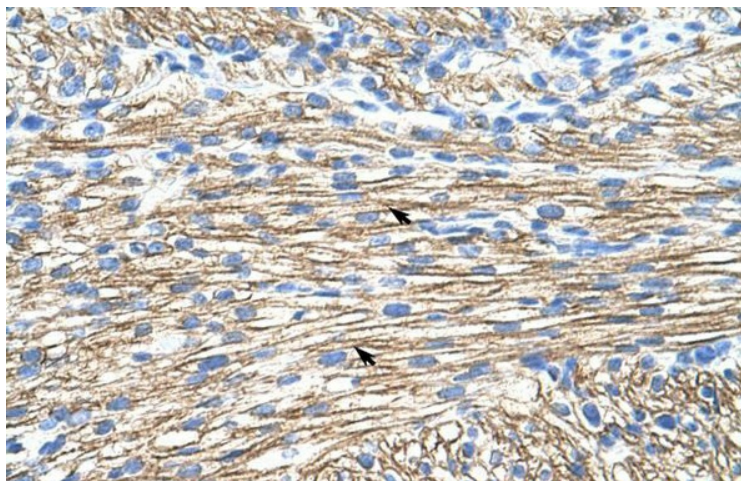
Product Type:	Primary Antibodies
Applications:	IHC, WB
Recommended Dilution:	WB, IHC
Reactivity:	Human
Host:	Rabbit
Isotype:	IgG
Clonality:	Polyclonal
Immunogen:	The immunogen for anti-MBNL1 antibody: synthetic peptide directed towards the middle region of human MBNL1. Synthetic peptide located within the following region: AMTQSAVKSLKRPLEATFDLGIPQAVLPPLPKRPALEKTNGATAVFNTGI
Formulation:	Liquid. Purified antibody supplied in 1x PBS buffer with 0.09% (w/v) sodium azide and 2% sucrose. <i>Note that this product is shipped as lyophilized powder to China customers.</i>
Purification:	Affinity Purified
Conjugation:	Unconjugated
Storage:	Store at -20°C as received.
Stability:	Stable for 12 months from date of receipt.
Predicted Protein Size:	38 kDa
Gene Name:	muscleblind like splicing regulator 1
Database Link:	NP_066368 Entrez Gene 4154 Human Q9NR56
Background:	MBNL1 contains 4 C3H1-type zinc fingers and binds to CUG triplet repeat expansion dsRNA.
Synonyms:	EXP; EXP35; EXP40; EXP42; MBNL
Note:	Immunogen Sequence Homology: Dog: 100%; Pig: 100%; Rat: 100%; Horse: 100%; Human: 100%; Rabbit: 100%; Zebrafish: 100%; Mouse: 79%



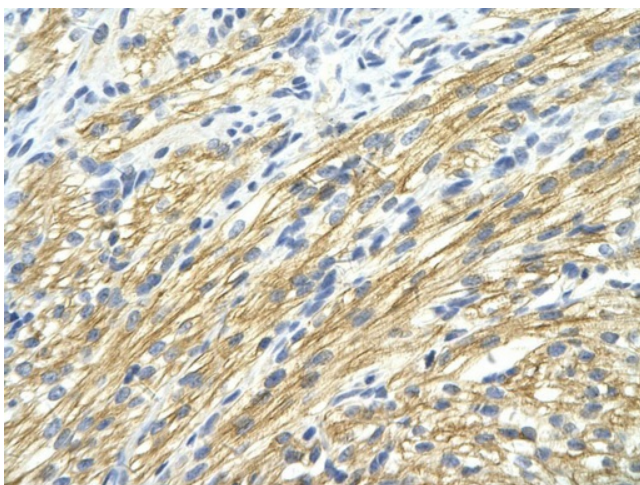
[View online »](#)

Product images:

WB Suggested Anti-MBNL1 Antibody Titration: 0.2-1 ug/ml; ELISA Titer: 1: 1562500; Positive Control: Jurkat cell lysate; MBNL1 is strongly supported by BioGPS gene expression data to be expressed in Human Jurkat cells



Rabbit Anti-MBNL1 Antibody; Paraffin Embedded Tissue: Human Heart; Cellular Data: Myocardial cells; Antibody Concentration: 4.0-8.0 ug/ml; Magnification: 400X



Rabbit Anti-MBNL1 Antibody; Paraffin Embedded
Tissue: Human cardiac cell; Cellular Data:
Epithelial cells of renal tubule; Antibody
Concentration: 4.0-8.0 ug/ml; Magnification: 400X