

Product datasheet for **TA344052**

Synaptojanin (SYNJ1) Rabbit Polyclonal Antibody

Product data:

Product Type:	Primary Antibodies
Applications:	WB
Recommended Dilution:	WB
Reactivity:	Human
Host:	Rabbit
Isotype:	IgG
Clonality:	Polyclonal
Immunogen:	The immunogen for anti-SYNJ1 antibody: synthetic peptide directed towards the middle region of human SYNJ1. Synthetic peptide located within the following region: PGVARREMEAPKSPGTTTRKDNIGRSQPSPQAGLAGPGPAGYSTARPTIPP
Formulation:	Liquid. Purified antibody supplied in 1x PBS buffer with 0.09% (w/v) sodium azide and 2% sucrose. <i>Note that this product is shipped as lyophilized powder to China customers.</i>
Purification:	Affinity Purified
Conjugation:	Unconjugated
Storage:	Store at -20°C as received.
Stability:	Stable for 12 months from date of receipt.
Predicted Protein Size:	173 kDa
Gene Name:	synaptojanin 1
Database Link:	NP_003886 Entrez Gene 8867 Human O43426
Background:	Synaptojanin 1 is a phosphoinositide phosphatase that regulates levels of membrane phosphatidylinositol-4,5-bisphosphate. As such, expression of this enzyme may affect synaptic transmission and membrane trafficking.
Synonyms:	INPP5G; PARK20
Note:	Immunogen Sequence Homology: Pig: 100%; Human: 100%; Horse: 93%; Rabbit: 93%; Rat: 92%; Mouse: 92%; Dog: 86%; Guinea pig: 86%

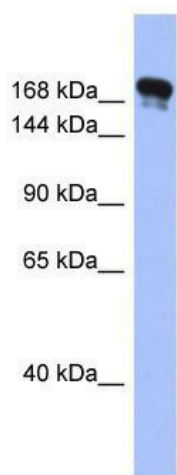


[View online »](#)

Protein Families: Druggable Genome, Phosphatase

Protein Pathways: Inositol phosphate metabolism, Metabolic pathways, Phosphatidylinositol signaling system

Product images:



WB Suggested Anti-SYNJ1 Antibody Titration: 0.2-1 ug/ml; ELISA Titer: 1: 312500; Positive Control: Human Stomach