

Product datasheet for **TA344049**

Rpl23a Rabbit Polyclonal Antibody

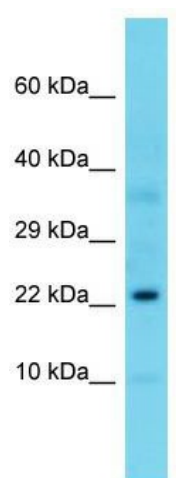
Product data:

Product Type:	Primary Antibodies
Applications:	WB
Recommended Dilution:	WB
Reactivity:	Mouse
Host:	Rabbit
Isotype:	IgG
Clonality:	Polyclonal
Immunogen:	The immunogen for Anti-Rpl23a antibody is: synthetic peptide directed towards the C-terminal region of Mouse Rpl23a. Synthetic peptide located within the following region: DVKANKHQIKQAVKKLYDIDVAKVNTLIRPDGEKKAYVRLAPDYDALDVA
Formulation:	Liquid. Purified antibody supplied in 1x PBS buffer with 0.09% (w/v) sodium azide and 2% sucrose. <i>Note that this product is shipped as lyophilized powder to China customers.</i>
Purification:	Affinity Purified
Conjugation:	Unconjugated
Storage:	Store at -20°C as received.
Stability:	Stable for 12 months from date of receipt.
Predicted Protein Size:	18 kDa
Gene Name:	ribosomal protein L23A
Database Link:	NP_997406 Entrez Gene 268449 Mouse P62751
Background:	This protein binds to a specific region on the 26S rRNA.
Synonyms:	FLJ27455; MDA20
Note:	Immunogen Sequence Homology: Pig: 100%; Human: 100%; Dog: 92%; Rat: 86%; Horse: 86%; Mouse: 86%; Sheep: 86%; Bovine: 86%; Rabbit: 86%; Zebrafish: 86%; Guinea pig: 86%



[View online »](#)

Product images:



Host: Rabbit; Target Name: Rpl23a; Sample
Tissue: Mouse Liver lysates; Antibody Dilution: 1.0
ug/ml