

## Product datasheet for **TA344045**

### splicing factor 1 (SF1) Rabbit Polyclonal Antibody

#### Product data:

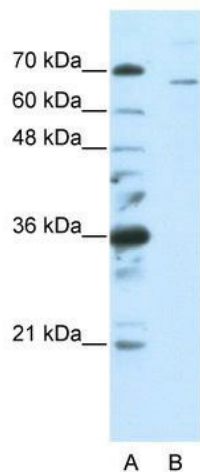
Product Type:	Primary Antibodies
Applications:	WB
Recommended Dilution:	WB
Reactivity:	Human
Host:	Rabbit
Isotype:	IgG
Clonality:	Polyclonal
Immunogen:	The immunogen for anti-SF1 antibody: synthetic peptide directed towards the C terminal of human SF1. Synthetic peptide located within the following region: MASSTPLPWQQNTTTTTTSAGTGSIPPWQQQAAAAASPGAPQMQGNPTM
Formulation:	Liquid. Purified antibody supplied in 1x PBS buffer with 0.09% (w/v) sodium azide and 2% sucrose. <i>Note that this product is shipped as lyophilized powder to China customers.</i>
Purification:	Affinity Purified
Conjugation:	Unconjugated
Storage:	Store at -20°C as received.
Stability:	Stable for 12 months from date of receipt.
Predicted Protein Size:	68 kDa
Gene Name:	splicing factor 1
Database Link:	<a href="#">NP_004621</a> <a href="#">Entrez Gene 7536 Human</a> <a href="#">Q15637</a>
Background:	SF1 contains 1 KH domain and 1 CCHC-type zinc finger. It is necessary for the ATP-dependent first step of spliceosome assembly and binds to the intron branch point sequence (BPS) 5'-UACUAAC-3' of the pre-mRNA. It may act as transcription repressor.
Synonyms:	BBP; D11S636; MBBP; ZCCHC25; ZFM1; ZNF162
Note:	Immunogen Sequence Homology: Dog: 100%; Pig: 100%; Rat: 100%; Horse: 100%; Human: 100%; Mouse: 100%; Bovine: 100%; Rabbit: 100%; Guinea pig: 100%; Goat: 92%



[View online »](#)

Protein Families: Transcription Factors

### Product images:



WB Suggested Anti-SF1 Antibody Titration: 0.2-1 ug/ml; ELISA Titer: 1: 62500; Positive Control: HepG2 cell lysate SF1 is supported by BioGPS gene expression data to be expressed in HepG2